

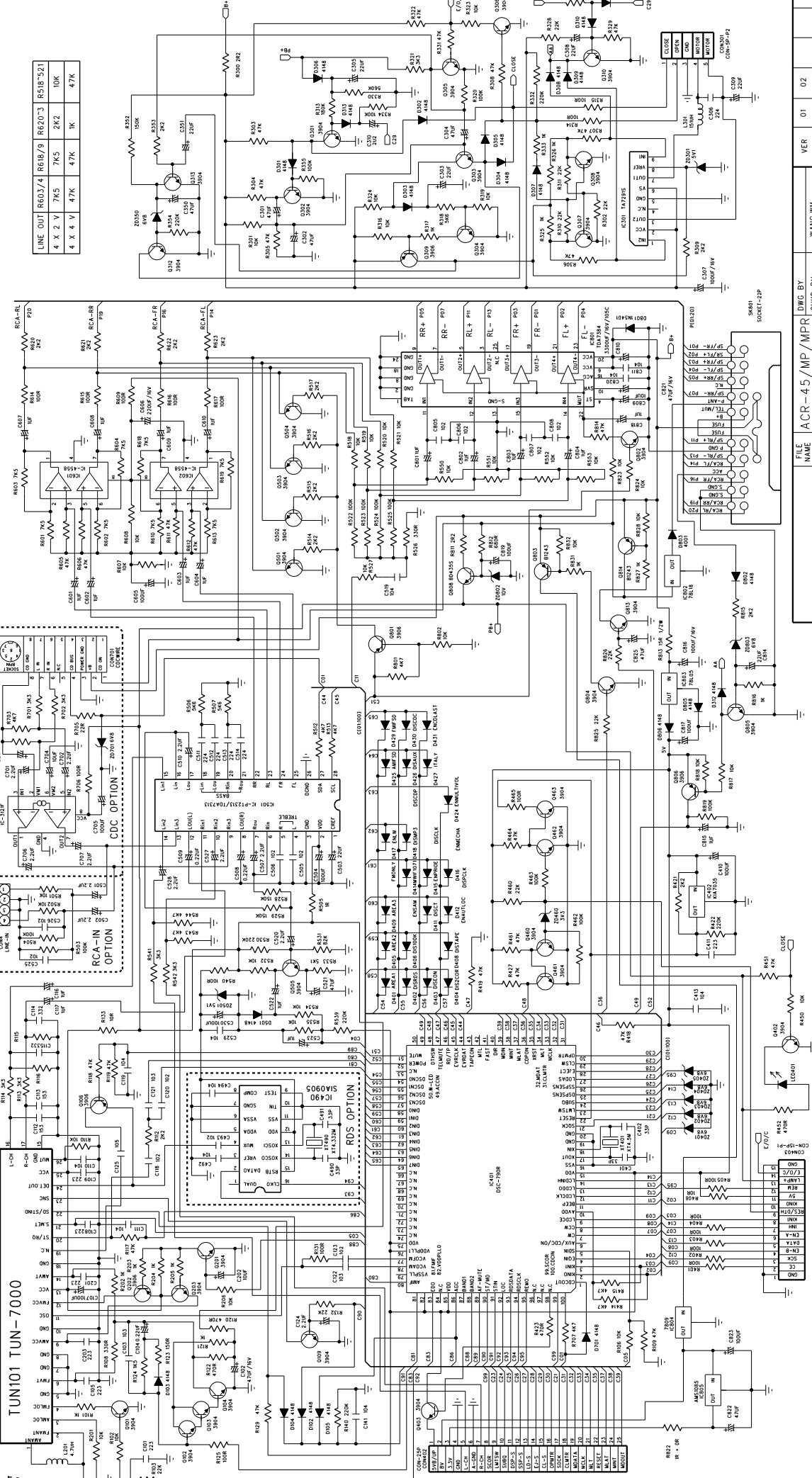


AKAI

**PULL SYNTHESIZED
STEREO RADIO WITH
COMPACT DISC PLAYER
DIGITAL**

Models:
ACR-25MP
ACR-35MP
ACR-45MP

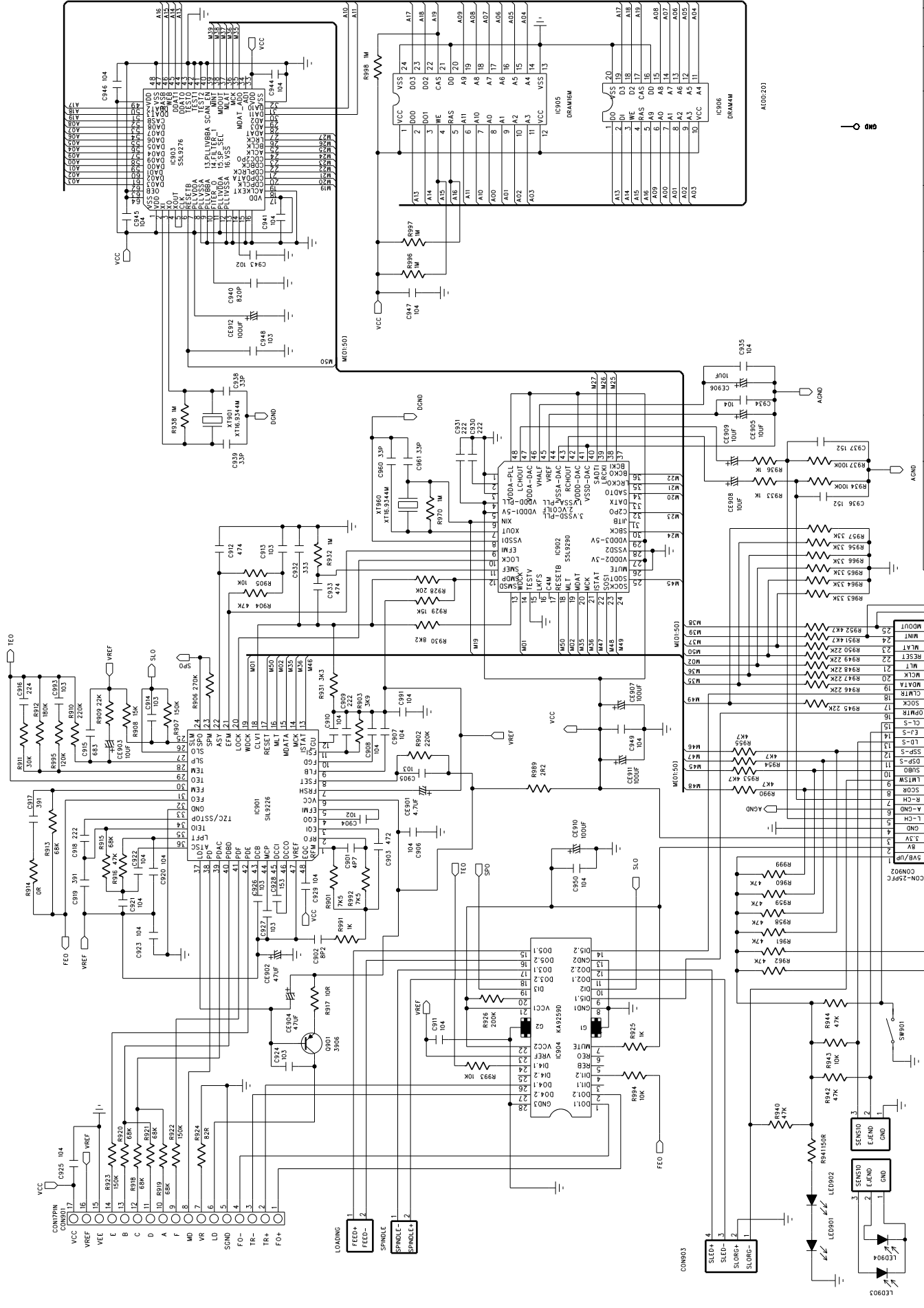
SERVICE MANUAL



LINE OUT	RE63/4	RE68/9	RE20/3	RS18/5/21
4 X 2 V	7K5	7K5	2K2	10K
4 X 4 V	4.7K	4.7K	1K	4.7K

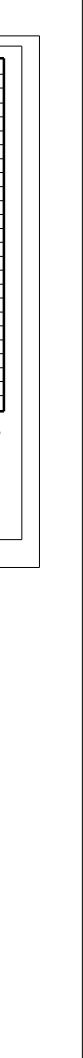
FILE NAME	WANG WM	VER	01
MODEL		DATE	02/09/24/01
NAME	ACR-45	APPROVED BY	2003/2003
DWG. BY		CHKD. BY	

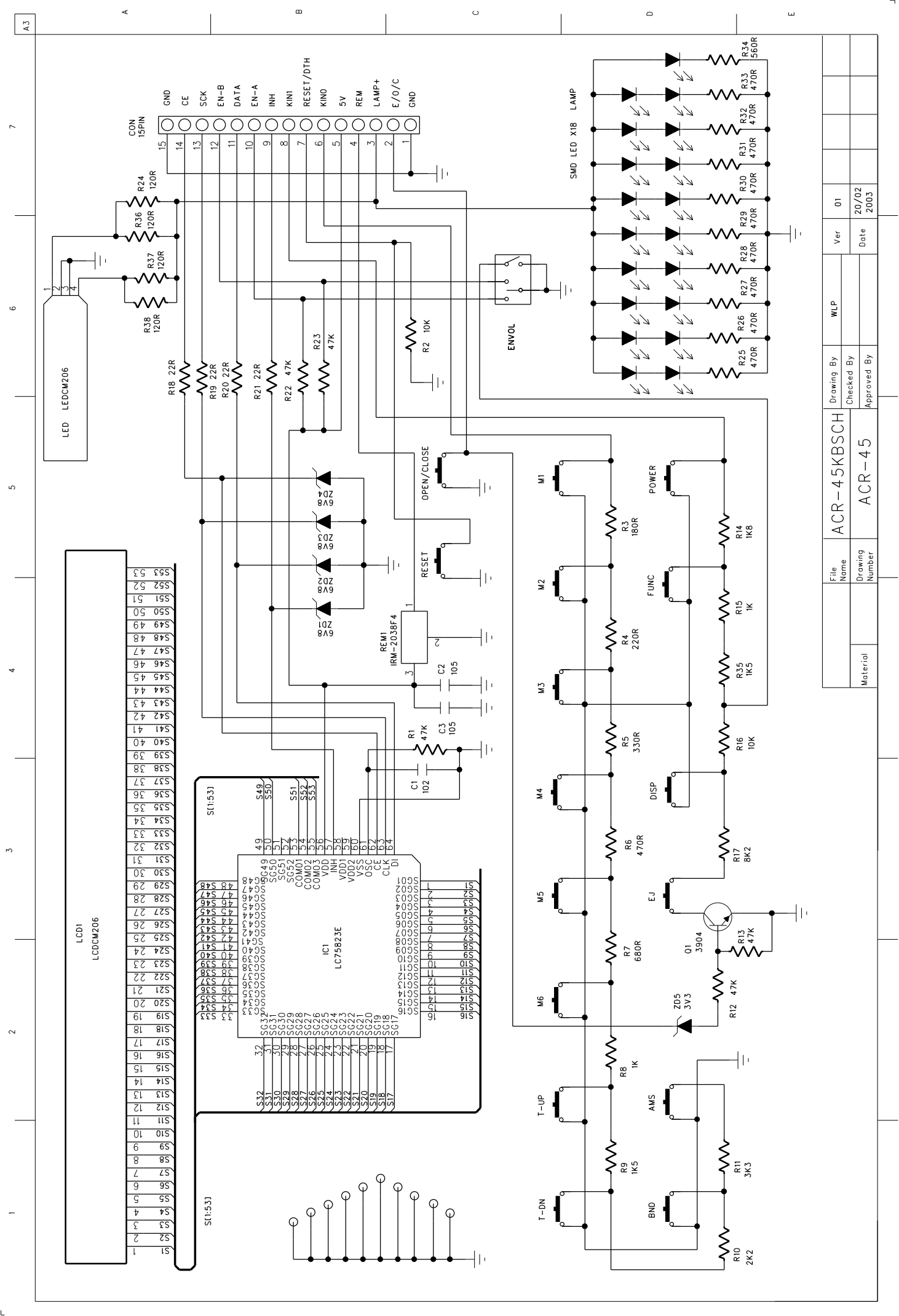
TO KEY BOARD



File Name	MP3-SERVO	Ver	01
Drawing Number	ACR-45	Checked By	
		Date	20/02 2003
Material		Approved By	

0 0 0 0





A3
7
6
5
4
3
2
1

A
B
C
D
E

CON 15PIN
15
14
13
12
11
10
9
8
7
6
5
4
3
2
1

GND CE SCK EN-B DATA EN-A INH KINI RESET/DTH KINO 5V REM LAMP+ E/O/C GND

LED LDCM206
1
2
3
4

R24 120R R36 120R R37 120R R38 120R R18 22R R19 22R R20 22R R21 22R R22 47K R23 47K R2 10K

6V8 2D1 6V8 2D2 6V8 2D3 6V8 2D4

IRM-2038F4
1
2
3

RESET OPEN/CLOSE

C1 102 C2 105 C3 105 R1 47K

IC1 LC75823E
49 50 51 52 53 54 55 56 57 58 59 60 61 62 63 64

SG49 SG50 SG51 SG52 SG53 COM01 COM02 COM03 VDD VDD1 VDD2 VSS VSS1 VSS2 OSC CE KINO CLK DI

SG48 SG47 SG46 SG45 SG44 SG43 SG42 SG41 SG40 SG39 SG38 SG37 SG36 SG35 SG34 SG33 SG32 SG31 SG30 SG29 SG28 SG27 SG26 SG25 SG24 SG23 SG22 SG21 SG20 SG19 SG18 SG17

SG32 SG31 SG30 SG29 SG28 SG27 SG26 SG25 SG24 SG23 SG22 SG21 SG20 SG19 SG18 SG17

SG32 SG31 SG30 SG29 SG28 SG27 SG26 SG25 SG24 SG23 SG22 SG21 SG20 SG19 SG18 SG17

SG32 SG31 SG30 SG29 SG28 SG27 SG26 SG25 SG24 SG23 SG22 SG21 SG20 SG19 SG18 SG17

SG32 SG31 SG30 SG29 SG28 SG27 SG26 SG25 SG24 SG23 SG22 SG21 SG20 SG19 SG18 SG17

SG32 SG31 SG30 SG29 SG28 SG27 SG26 SG25 SG24 SG23 SG22 SG21 SG20 SG19 SG18 SG17

SG32 SG31 SG30 SG29 SG28 SG27 SG26 SG25 SG24 SG23 SG22 SG21 SG20 SG19 SG18 SG17

SG32 SG31 SG30 SG29 SG28 SG27 SG26 SG25 SG24 SG23 SG22 SG21 SG20 SG19 SG18 SG17

SG32 SG31 SG30 SG29 SG28 SG27 SG26 SG25 SG24 SG23 SG22 SG21 SG20 SG19 SG18 SG17

SG32 SG31 SG30 SG29 SG28 SG27 SG26 SG25 SG24 SG23 SG22 SG21 SG20 SG19 SG18 SG17

SG32 SG31 SG30 SG29 SG28 SG27 SG26 SG25 SG24 SG23 SG22 SG21 SG20 SG19 SG18 SG17

SG32 SG31 SG30 SG29 SG28 SG27 SG26 SG25 SG24 SG23 SG22 SG21 SG20 SG19 SG18 SG17

SG32 SG31 SG30 SG29 SG28 SG27 SG26 SG25 SG24 SG23 SG22 SG21 SG20 SG19 SG18 SG17

SG32 SG31 SG30 SG29 SG28 SG27 SG26 SG25 SG24 SG23 SG22 SG21 SG20 SG19 SG18 SG17

SG32 SG31 SG30 SG29 SG28 SG27 SG26 SG25 SG24 SG23 SG22 SG21 SG20 SG19 SG18 SG17

SG32 SG31 SG30 SG29 SG28 SG27 SG26 SG25 SG24 SG23 SG22 SG21 SG20 SG19 SG18 SG17

SG32 SG31 SG30 SG29 SG28 SG27 SG26 SG25 SG24 SG23 SG22 SG21 SG20 SG19 SG18 SG17

SG32 SG31 SG30 SG29 SG28 SG27 SG26 SG25 SG24 SG23 SG22 SG21 SG20 SG19 SG18 SG17

SG32 SG31 SG30 SG29 SG28 SG27 SG26 SG25 SG24 SG23 SG22 SG21 SG20 SG19 SG18 SG17

SG32 SG31 SG30 SG29 SG28 SG27 SG26 SG25 SG24 SG23 SG22 SG21 SG20 SG19 SG18 SG17

SG32 SG31 SG30 SG29 SG28 SG27 SG26 SG25 SG24 SG23 SG22 SG21 SG20 SG19 SG18 SG17

SG32 SG31 SG30 SG29 SG28 SG27 SG26 SG25 SG24 SG23 SG22 SG21 SG20 SG19 SG18 SG17

SG32 SG31 SG30 SG29 SG28 SG27 SG26 SG25 SG24 SG23 SG22 SG21 SG20 SG19 SG18 SG17

SG32 SG31 SG30 SG29 SG28 SG27 SG26 SG25 SG24 SG23 SG22 SG21 SG20 SG19 SG18 SG17

SG32 SG31 SG30 SG29 SG28 SG27 SG26 SG25 SG24 SG23 SG22 SG21 SG20 SG19 SG18 SG17

SG32 SG31 SG30 SG29 SG28 SG27 SG26 SG25 SG24 SG23 SG22 SG21 SG20 SG19 SG18 SG17

SG32 SG31 SG30 SG29 SG28 SG27 SG26 SG25 SG24 SG23 SG22 SG21 SG20 SG19 SG18 SG17

SG32 SG31 SG30 SG29 SG28 SG27 SG26 SG25 SG24 SG23 SG22 SG21 SG20 SG19 SG18 SG17

SG32 SG31 SG30 SG29 SG28 SG27 SG26 SG25 SG24 SG23 SG22 SG21 SG20 SG19 SG18 SG17

SG32 SG31 SG30 SG29 SG28 SG27 SG26 SG25 SG24 SG23 SG22 SG21 SG20 SG19 SG18 SG17

SG32 SG31 SG30 SG29 SG28 SG27 SG26 SG25 SG24 SG23 SG22 SG21 SG20 SG19 SG18 SG17

SG32 SG31 SG30 SG29 SG28 SG27 SG26 SG25 SG24 SG23 SG22 SG21 SG20 SG19 SG18 SG17

SG32 SG31 SG30 SG29 SG28 SG27 SG26 SG25 SG24 SG23 SG22 SG21 SG20 SG19 SG18 SG17

SG32 SG31 SG30 SG29 SG28 SG27 SG26 SG25 SG24 SG23 SG22 SG21 SG20 SG19 SG18 SG17

File Name	WLP	Ver	01
Drawing Number	ACR-45	Checked By	20/02
Material		Approved By	2003

BMMODE BMSTAGI B MPART			BIDESC	BDDOCNO	BMUNIT
03074	ASM1	1 221-20600-00-00-00	INSULATING SHEET	TOP OF THE FRAME	1
03074	ASM1	1 225-20602-00-00-00	REMOTE CONTROL SPONGE	BOTTOM OF THE TOP COVER DVD MOTOR	1
03074	ASM1	1 332-20600-00-00-00	FRAME DVD MOTOR	BOTTOM OF THE MB	1
03074	ASM1	1 332-20601-00-00-00	FRAME BACK SHEET	BACK OF THE FRAME	1
03074	ASM1	1 337-20600-00-00-01	SHORT SHEET	OUTSIDE OF THE BODY	1
03074	ASM1	1 435-20040-74-10-00	SCREW BTS2004	FRONT FRAME TO FRAME DVD MOTOR	4
03074	ASM1	1 435-26050-74-10-00	SCREW M2.6X5.0	FRAME BACK TO FRAME DVD(3EA),MB FRAME DVD(1EA)	4
03074	ASM1	1 435-26060-74-10-00	SCREW M2.6X6.0	BRACKET KOMEK DECK FRONT TO FRAME DVD(2EA);HEATSINK MAIN TO FRAME DVD MOTOR(2EA)BRACKET DECK BACK FRAME BACK(2EA)	6
03074	ASM1	1 435-26070-05-10-00	SCREW PTP2607	SOCKET TO FRAME BACK SHEET	2
03074	ASM1	1 435-26100-74-10-00	SCREW M2.6X10.0	HEATSINK MAIN TO FRAME BACK SHEET	2
03074	ASM1	1 435-26140-74-10-00	SCREW BTS2614	HEATSINK MAIN TO BRACKET IC 7386	2
03074	ASM1	1 331-20600-00-00-01	TOP COVER DVD MOTOR	TOP OF THE FRAME	1
03074	ASM10	1 333-20600-00-00-00	HEATSINK MAIN	TOP OF THE MB	1
03074	ASM10	1 333-20601-00-00-00	HEATSINK IC 7809&BD435	TOP OF THE MB	1
03074	ASM10	1 335-20610-00-00-00	BRACKET IC7386	TOP OF THE MB	1
03074	ASM10	1 435-26050-76-10-00	SCREW BTB2605	IC7809 TO HEATSINK	1
03074	ASM10	1 435-26070-76-10-00	SCREW BTB2607	IC BD435 TO HEATSINK	1
03074	ASM11	1 100-78L05-00-00-04	IC 78L05 REGULATOR ST	IC803	1
03074	ASM11	1 100-78L18-00-00-04	IC 78L18 REGULATOR ST	IC802	1
03074	ASM11	1 100-AMS10-85-33-22	I.C.AMS1085CT-3V3 TO-220	IC805	1
03074	ASM11	1 100-L7809-00-00-04	IC L7809 REGULATOR ST	IC804	1
03074	ASM11	1 100-TA729-1S-00-01	IC TA7291S MOTOR-CTC TOSHIBA	IC301	1
03074	ASM11	1 100-TDA73-84-00-04	I.C.TDA7384	IC801	1
03074	ASM11	1 111-CM206-MB-21-01	CM206 MB S/S 191.2*150*1.6MM		1
03074	ASM11	1 122-T7000-CE-00-00	FM/AM TUNER(CET-7000AFL)	TUN101	1
03074	ASM11	1 384-CM206-01-05-6E	P=2.0MM 5PIN WAFER	CON301	1
03074	ASM11	1 384-CM206-01-16-6E	16PIN FPC SOCKET 1.0	CON403	1

03074	ASM11	1	384-CM206-01-20-6E	20PIN PWR/SPK SOCKET EST-KNT-20-04	CON801	1
03074	ASM11	1	384-CM206-01-25-6E	25PIN FPC SOCKET 1.25	CON402	1
03074	ASM11	1	410-HIRED-EE-00-02	∅3MM LED HI-RED 30MM PIN	LED401	1
03074	ASM11	1	449-105FM-FG-21-2E	CE 1μF/50V ±20% 4X5 105°C	C116~7,C522~3,C601~4,C801~4,C815,C818	14
03074	ASM11	1	449-106DM-FG-21-2E	CE 10μF/16V ±20% 4X5 105°C	C202,C809	2
03074	ASM11	1	449-107DM-JG-21-6E	CE 100μF/16V ±20% 6.3X5 105°C	C307,C816,C107,C410,C504,C817,C605,C819,C823,C530	10
03074	ASM11	1	449-224FM-FG-21-2E	CE 0.22μF/50V ±20% 4X5 105°C	C104,C508~509	3
03074	ASM11	1	449-225FM-FG-21-2E	CE 2.2μF/50V ±20% 4X5 105°C	C607~610,C124,C507,C510,C520,C527~528	10
03074	ASM11	1	449-226DM-FG-21-2E	CE 22μF/16V ±20% 4X5 105°C	C303,C308~309,C503,C814,C305,C351	7
03074	ASM11	1	449-227DM-GP-11-4E	CE 220μF/16V ±20% 5X11 85°C	C606	1
03074	ASM11	1	449-338DM-R2-21-GE	CE 3300μF/16V ±20% 12.5X25 105°C	C810	1
03074	ASM11	1	449-476DM-GG-21-4E	CE 47μF/16V ±20% 5X5 105°C	C301~302,C304,C521,C822,C102,C821,C350,C825	9
03074	ASM11	1	461-1507J-00-01-0A	RCF 15Ω 1/2W ±5% RTS	R813	1
03074	ASM11	1	461-2R27J-00-01-0A	RCF 2Ω 1/2W ±5% RTS	R300,R811	2
03074	ASM11	1	481-N4001-EG-10-22	DIODE IN4001	D803	1
03074	ASM11	1	481-N5401-GO-50-22	DIODE IN5401	D801	1
03074	ASM11	1	490-B1243-00-D2-64	TR B1243 POWER SWITCH	Q803,Q814	2
03074	ASM11	1	490-BD435-S0-00-04	T.R.BD435S SAMSUNG	Q808	1
03074	ASM11	1	501-150L4-GX-00-00	15A DIN FUSE		1
03074	ASM11	1	514-1510K-MU-00-M4	STAND INDUCTOR 150μH	L301	1
03074	ASM11	1	560-CM206-21-00-00	ANT SOCKET W/GND L=230MM	ANT	1
03074	ASM11	1	520-45000-GP-0E-39	XT 4.5000MHZ(-20°C~+70°C) HC-49/US	XT401	1
03074	ASM11	1	520-43320-GP-00-39	CRYSTAL 4.332MHZ DIP	XT490	1
03074	ASM12	1	100-2313L-00-00-0G	I.C.PT2313L SO-28	IC501	1
03074	ASM12	1	100-70350-00-00-0E	I.C.KIA7035AF TO-92	IC402	1
03074	ASM12	1	100-MC455-80-00-0H	IC MC4558 SOP DUAL OPERATIONAL AMPLIFIER	IC601~2	2
03074	ASM12	1	442-102FK-00-00-0W	CC 1000PF/50V ±10% SMT 0603(X7R)	C118,C120,C123,C505~6,C805~8,C493	10
03074	ASM12	1	442-103FK-00-00-0W	CC 0.01μF/50V ±10% SMT 0603(X7R)	C103,C121~122	3

03074	ASM12	1	442-104DZ-00-00-0W	CC 0.1 μ F/16V +80% -20% SMT 0603	C110~111,C519,C413,C820,C811,C141,C492,C494,C529	10
03074	ASM12	1	442-153FM-00-00-0W	CC 0.015 μ F/50V \pm 20% SMT 0603	C112,C113	2
03074	ASM12	1	442-223FM-00-00-0W	CC 0.022 μ F/50V \pm 20% SMT 0603	C101,C105,C108~109,C201,C203,C411	7
03074	ASM12	1	442-224DZ-00-00-0W	CC 0.22 μ F/16V +80% -20% SMT 0603	C306,C511~514	5
03074	ASM12	1	442-332FK-00-00-0W	CC 3300PF/50V \pm 10% SMT 0603(X7R)	C114,C115	2
03074	ASM12	1	460-0R00J-00-01-0V	RMF 0 Ω 1/10W \pm 5% SMT 0805	R822,R126	2
03074	ASM12	1	460-101BJ-00-01-0W	RMF 100 Ω 1/16W \pm 5% SMT 0603	R125,R131,R314~5,R401~5,R465,R614~7	14
03074	ASM12	1	460-1020J-00-01-0V	RMF 1K Ω 1/10W \pm 5% SMT 0805	R831,R827	2
03074	ASM12	1	460-102BJ-00-01-0W	RMF 1K Ω 1/16W \pm 5% SMT 0603	R101,R121,R202~5,R317,R816,R325~6,R333 R102/110,R201,R301/316/319/324,R450,R518~21, R527/532/534/535,R550~3,R607~8,R802,R832,R81 7~8,R823/824/828,R106	11
03074	ASM12	1	460-103BJ-00-01-0W	RMF 10K Ω 1/16W \pm 5% SMT 0603		30
03074	ASM12	1	460-104BJ-00-01-0W	RMF 100K Ω 1/16W \pm 5% SMT 0603	R320,R819,R355,R462~463	5
03074	ASM12	1	460-151BJ-00-01-0W	RMF 150 Ω 1/16W \pm 5% SMT 0603	R123	1
03074	ASM12	1	460-152BJ-00-01-0W	RMF 1K5 Ω 1/16W \pm 5% SMT 0603	R124	1
03074	ASM12	1	460-154BJ-00-01-0W	RMF 150K Ω 1/16W \pm 5% SMT 0603	R352	1
03074	ASM12	1	460-184BJ-00-01-0W	RMF 180K Ω 1/16W \pm 5% SMT 0603	R313	1
03074	ASM12	1	460-1R0BJ-00-01-0W	RMF 1 Ω 1/16W \pm 5% SMT 0603	R505	1
03074	ASM12	1	460-222BJ-00-01-0W	RMF 2K2 Ω 1/16W \pm 5% SMT 0603	R421,R514~517,R620~623,R815,R112	11
03074	ASM12	1	460-223BJ-00-01-0W	RMF 22K Ω 1/16W \pm 5% SMT 0603	R103,R302,R310~311,R328,R460,R825~826	8
03074	ASM12	1	460-224BJ-00-01-0W	RMF 220K Ω 1/16W \pm 5% SMT 0603	R422,R530,R140,R354	4
03074	ASM12	1	460-331BJ-00-01-0W	RMF 330 Ω 1/16W \pm 5% SMT 0603	R108,R526	2
03074	ASM12	1	460-332BJ-00-01-0W	RMF 3K3 Ω 1/16W \pm 5% SMT 0603	R113~114,R541~542,R321	5
03074	ASM12	1	460-471BJ-00-01-0W	RMF 470 Ω 1/16W \pm 5% SMT 0603	R122	1
03074	ASM12	1	460-472BJ-00-01-0W	RMF 4K7 Ω 1/16W \pm 5% SMT 0603	R543~544,R801	3
03074	ASM12	1	460-473BJ-00-01-0W	RMF 47K Ω 1/16W \pm 5% SMT 0603	R117,R129,R303~8,R322,R329,R331,R418~9,R427,R 461,R464,R605~6,R611~2,R814,R451,R118	23
03074	ASM12	1	460-512BJ-00-01-0W	RMF 5K1 Ω 1/16W \pm 5% SMT 0603	R533	1
03074	ASM12	1	460-562BJ-00-01-0W	RMF 5K6 Ω 1/16W \pm 5% SMT 0603	R318,R506~507	3
03074	ASM12	1	460-563BJ-00-01-0W	RMF 56K Ω 1/16W \pm 5% SMT 0603	R312	1
03074	ASM12	1	460-564BJ-00-01-0W	RMF 560K Ω 1/16W \pm 5% SMT 0603	R330	1

03074	ASM12	1	460-752BJ-00-01-0W	RMF 7K5Ω 1/16W ±5% SMT 0603	R601~604,R610,R613,R618~619	8
03074	ASM12	1	460-823BJ-00-01-0W	RMF 82KΩ 1/16W ±5% SMT 0603	R531	1
03074	ASM12	1	490-39040-00-00-2H	TR 3904(SMT SOT-23)NPN	Q101~4,Q109,Q201,Q203,Q301~8,Q310,Q402~3,Q460~3,Q501~5,Q802,Q804~5,Q813,Q312~3	33
03074	ASM12	1	490-39060-00-00-2H	TR 3906(SMT SOT-23)PNP	Q202,Q309,Q801,Q806,Q106	5
03074	ASM12	1	442-330FJ-00-00-0W	CC 33PF/50V ±5% SMT 0603	C490,C491□C401□C402	4
03074	ASM12	1	100-BU192-40-00-00	IC BU1924 RDS DEMODULATOR	IC490	1
03074	ASM12	1	100-7900R-00-00-0G	I.C.DSC-790R(DONGSUNG)	IC-7900R	1
03074	ASM12	1	442-105DZ-00-00-0V	CC 1μF/16V +80% -20% SMT 0805	C125	1
03074	ASM13	1	215-0055A-05-00-11	JUMP WIRE 5.5MM φ0.5MM	J65,J75	2
03074	ASM13	1	215-0060A-05-00-11	JUMP WIRE 6MM φ0.5MM	J1,J21,J23,J34,J36,J38,J41,J43~44,J50,J74,J89	12
03074	ASM13	1	215-0070A-05-00-11	JUMP WIRE 7MM φ0.5MM	J31~32,J35,J39,J60,J68,J73	7
03074	ASM13	1	215-0075A-05-00-11	JUMP WIRE 7.5MM φ0.5MM	J47	1
03074	ASM13	1	215-0080A-05-00-11	JUMP WIRE 8MM φ0.5MM	J2,J3,J5,J6,J11,J20,J22,J46,J51,J55	10
03074	ASM13	1	215-0085A-05-00-11	JUMP WIRE 8.5MM φ0.5MM	J57	1
03074	ASM13	1	215-0090A-05-00-11	JUMP WIRE 9MM φ0.5MM	J61,J86,J90	3
03074	ASM13	1	215-0095A-05-00-11	JUMP WIRE 9.5MM φ0.5MM	J10,J12,J37	3
03074	ASM13	1	215-0100A-05-00-11	JUMP WIRE 10MM φ0.5MM	J9,J19,J66,J76,J93,J94	6
03074	ASM13	1	215-0105A-05-00-11	JUMP WIRE 10.5MM φ0.5MM	J42,J49,J81	3
03074	ASM13	1	215-0110A-05-00-11	JUMP WIRE 11MM φ0.5MM	J4,J40,J56,J70~72,J78~80,J84~85,J92	12
03074	ASM13	1	215-0120A-05-00-11	JUMP WIRE 12MM φ0.5MM	J24~25,J33,J58,J62~64,J67,J69,J87	10
03074	ASM13	1	215-0130A-05-00-11	JUMP WIRE 13MM φ0.5MM	J82	1
03074	ASM13	1	215-0135A-05-00-11	JUMP WIRE 13.5MM φ0.5MM	J7,J8,J13,J48	4
03074	ASM13	1	215-0140A-05-00-11	JUMP WIRE 14MM φ0.5MM	J77	1
03074	ASM13	1	215-0145A-05-00-11	JUMP WIRE 14.5MM φ0.5MM	J30,J59	2
03074	ASM13	1	215-0155A-05-00-11	JUMP WIRE 15.5MM φ0.5MM	J52~54	3
03074	ASM13	1	215-0160A-05-00-11	JUMP WIRE 16MM φ0.5MM	J18	1
03074	ASM13	1	215-0185A-05-00-11	JUMP WIRE 18.5MM φ0.5MM	J88	1
03074	ASM13	1	215-0190A-05-00-11	JUMP WIRE 19MM φ0.5MM	J27~29	3
03074	ASM13	1	215-0205A-05-00-11	JUMP WIRE 20.5MM φ0.5MM	J14~17	4

03074	ASM13	1	215-0250A-05-00-11	JUMP WIRE 25MM ϕ 0.5MM	J45	1
03074	ASM13	1	215-0270A-05-00-11	JUMP WIRE 27MM ϕ 0.5MM	J83	1
03074	ASM13	1	461-1001J-00-01-0A	RCF 10 Ω 1/8W \pm 5% RTS	R406	1
03074	ASM13	1	461-1005J-00-01-0A	RCF 10 Ω 1/4W \pm 5% RTS	R133	1
03074	ASM13	1	461-1011J-00-01-0A	RCF 100 Ω 1/8W \pm 5% RTS	R609,R540	2
03074	ASM13	1	461-1031J-00-01-0A	RCF 10K Ω 1/8W \pm 5% RTS	R323,R206	2
03074	ASM13	1	461-1041J-00-01-0A	RCF 100K Ω 1/8W \pm 5% RTS	R522~525	4
03074	ASM13	1	461-1541J-00-01-0A	RCF 150K Ω 1/8W \pm 5% RTS	R528,R529	2
03074	ASM13	1	461-2221J-00-01-0A	RCF 2K2 Ω 1/8W \pm 5% RTS	R309,R353	2
03074	ASM13	1	461-2231J-00-01-0A	RCF 22K Ω 1/8W \pm 5% RTS	R132	1
03074	ASM13	1	461-2241J-00-01-0A	RCF 220K Ω 1/8W \pm 5% RTS	R539,R332	2
03074	ASM13	1	461-4711J-00-01-0A	RCF 470 Ω 1/8W \pm 5% RTS	R120,R452,R423	3
03074	ASM13	1	461-4721J-00-01-0A	RCF 4K7 Ω 1/8W \pm 5% RTS	R512~513,R414~415	4
03074	ASM13	1	461-6811J-00-01-0A	RCF 680 Ω 1/8W \pm 5% RTS	R812	1
03074	ASM13	1	481-N4148-CF-50-12	DIODE IN4148 1/2W	D102~5,D302~12,D401,D404~5,D408,D414,D416,D425~6,D429~30,D501,D802,D805~6,D301	30
03074	ASM13	1	485-1007J-00-00-02	ZENER DIODE 10V 1/2W	ZD802	1
03074	ASM13	1	485-3V37J-00-00-02	ZENER DIODE 3V3 1/2W	ZD460	1
03074	ASM13	1	485-6V87J-00-00-02	ZENER DIODE 6.8V 1/2W	ZD401~5,ZD803,ZD350,ZD301	8
03074	ASM13	1	510-4R70J-EG-00-02	COIL 4.7 μ H 3X5MM	L201	1
03074	ASM13	1	485-5V17J-00-00-02	ZENER DIODE 5.1V 1/2W	ZD501	1
03074	ASM14	1	118-CM206-FB-01-00	CM206 FLEX.FPC		1
03074	ASM14	1	220-20602-00-00-00	WASHER-22-025MM	TOP OF THE SHAFT	10
03074	ASM14	1	220-20603-00-00-00	FELT-16-025MM	TOP OF THE SHAFT	4
03074	ASM14	1	220-20604-00-00-00	FELT FOR GEAR	INSIDE OF THE GEAR B	1
03074	ASM14	1	224-20601-01-00-00	DUST PROOF	CABINET	1
03074	ASM14	1	249-20602-00-00-00	LIGHT GUIDE CABINET	BACK OF THE CABINET	1
03074	ASM14	1	251-20600-00-00-00	CABINET	FRONT OF THE FRAME	1
03074	ASM14	1	253-20601-00-00-00	RIGHT SLIDE GUIDE	INSIDE OF THE BOTTOM FRAME	1
03074	ASM14	1	253-20602-00-00-00	LEFT SLIDE GUIDE	INSIDE OF THE BOTTOM FRAME	1
03074	ASM14	1	253-20603-00-00-00	RIGHT RACK	TOP OF THE BOTTOM FRAME	1

03074	ASM14	1	253-20604-00-00-00	LOCK RING	INSIDE OF THE GEAR-B	1
03074	ASM14	1	253-20605-00-00-00	WORM GEAR	FRONT OF THE MOTOR	1
03074	ASM14	1	253-20606-00-00-00	LOCK	DOUBLESIDE OF THE BRACKET PANEL	2
03074	ASM14	1	253-20607-00-00-00	CONNECTOR COVER	BACK OF THE CONNECT 15PIN EST	1
03074	ASM14	1	253-20608-00-00-00	GEAR-A-AND-GEAR-B	TOP OF THE RIGHT RACK	1
03074	ASM14	1	253-20609-00-00-00	GEAR-A	INSIDE OF THE GEAR-B	1
03074	ASM14	1	253-20610-00-00-00	GEAR-B	LEFTWARD OF THE FRONT FRAME	1
03074	ASM14	1	290-20601-00-00-00	BUSH1	INSIDE OF THE GEAR-B	1
03074	ASM14	1	290-20602-00-00-00	CAP1	OUTSIDE OF THE GEAR-B	1
03074	ASM14	1	310-20601-00-00-01	SHAFT ϕ 2.48*12.15MM	GEAR TO FRONT FRAME	1
03074	ASM14	1	310-20602-00-00-01	SHAFT ϕ 5.78*9.95MM	GEAR-A-B TO FRONT FRAME	1
03074	ASM14	1	310-20603-00-00-01	SHAFT ϕ 1.98*4.1MM	LEFT SLIDE GUIDE TO FRONT FRAME	2
03074	ASM14	1	310-20605-00-00-01	SHAFT ϕ 2.48*3.3MM	LEFT/RIGHT ARM TO BRACKET PANEL	2
03074	ASM14	1	310-20606-00-00-01	SHAFT ϕ 4.0*2.9MM	BOTTOM FRAME TO BRACKET PANEL	2
03074	ASM14	1	310-20607-00-00-01	SHAFT ϕ 2.48*1.55MM	LEFT/RIGHT ARM TO FRONT FRAME	2
03074	ASM14	1	310-20608-00-00-01	SHAFT ϕ 1.98*5.3MM	RIGHT SLIDE GUIDE TO BRACKET SLIDE	2
03074	ASM14	1	335-20602-00-00-01	FRONT FRAME	TOP OF THE FRAME	1
03074	ASM14	1	335-20604-00-00-00	LEFT ARM	LEFTWARD OF THE FRONT FRAME	1
03074	ASM14	1	335-20605-00-00-00	RIGHT ARM	RIGHTWARD OF THE FRONT FRAME	1
03074	ASM14	1	335-20606-00-00-00	BRACKET SLIDE	OUTSIDE OF THE FRONT FRAME	1
03074	ASM14	1	335-20607-00-00-00	BRACKET PANEL	FRONT OF THE CABINET	1
03074	ASM14	1	374-20601-00-00-00	SPRING CABINET	ON THE LOCK	2
03074	ASM14	1	374-20602-00-00-00	SPRING FOR GEAR	INSIDE OF THE GEAR B	1
03074	ASM14	1	380-CM206-01-05-6E	5PIN FLAT CABLE GREY P=2.0		1
03074	ASM14	1	384-CM206-02-15-6E	15PIN SOCKET MALE ESTF-15-3-Z	ON THE CABINET	1
03074	ASM14	1	401-ESE11-HS-10-00	SWITCH REAR	ON THE PCB MOTOR	1
03074	ASM14	1	401-ESE11-HS-20-00	SWITCH FRONT	ON THE PCB MOTOR	1
03074	ASM14	1	435-16040-00-10-00	SCREW PM1604	RIGHT RACK TO BOTTOM FRAME	3
03074	ASM14	1	435-20015-70-03-00	SCREW BM20015	LEFT ARM&RIGHT ARM TO BRACKET PANEL	2
03074	ASM14	1	435-20030-70-00-00	SCREW BM2003	FRONT FRAME TO CABINET	4
03074	ASM14	1	435-20030-70-20-00	SCREW BM2003	BRACKET SLIDE TO FRONT FRAME	1

03074	ASM14	1	435-20030-80-10-00	SCREW PFM2003	MOTOR TO FRONT FRAME	2
03074	ASM14	1	435-20060-75-20-00	SCREW BTP2006	LIGHT GUIDE CABINET TO CABINET	2
03074	ASM14	1	435-20070-70-10-00	SCREW BM2007	PCB MOTOR TO FRONT FRAME	2
03074	ASM14	1	437-20301-80-00-00	M2X4 CM CYLINDER SCREW	LOCK TO CABINET	2
03074	ASM14	1	901-20600-00-00-00	DOUBLE SIDE TAPE FOR LENS	LENS-PANEL FRONT	0,5
03074	ASM14	1	322-FF050-SK-10-20	MOTOR MABUCHI FF-050SK	ON THE FRONT FRAME	1
03074	ASM14	1	335-20603-00-00-01	BOTTOM FRAME	INSIDE OF THE FRONT FRAME	1
03074	ASM2	1	250-20600-07-00-00	RIM	FRONT OF THE BODY	1
03074	ASM2	1	435-20070-25-00-00	SCREW FTP2007	LENS TO PANEL BACK	4
03074	ASM2	1	901-20600-00-00-00	DOUBLE SIDE TAPE FOR LENS	LENS-PANEL FRONT	2
03074	ASM2	1	241-22600-01-00-00	PANEL BACK FOR CM226	BACK OF THE HOUSING	1
03074	ASM2	1	249-22600-00-00-00	LIGHT GUIDE VOL	OUT OF THE ENCODER	1
03074	ASM2	1	249-22601-00-00-00	LINING KNOB LOUD&POWER	LINING KNOB LOUD&POWER	1
03074	ASM2	1	240-22600-00-07-00	PANEL FRONT FOR CM226	FRONT OF THE HOUSING	1
03074	ASM2	1	245-22601-00-07-00	KNOB AMS&AF FOR CM226	INSIDE OF THE PANEL	1
03074	ASM2	1	245-22603-00-07-00	KNOB SRC FOR CM226	INSIDE OF THE PANEL	1
03074	ASM2	1	245-22602-00-07-00	KNOB EJECT FOR CM226	INSIDE OF THE PANEL	1
03074	ASM2	1	245-22604-00-07-00	KNOB NUM FOR CM226	INSIDE OF THE PANEL	1
03074	ASM2	1	245-22605-00-05-00	KNOB ENCODER FOR CM226	OUT OF THE ENCODER	1
03074	ASM2	1	245-22606-00-07-00	KNOB SLIDE FOR CM226	FRONT OF THE PANEL	1
03074	ASM2	1	245-22607-00-07-00	KNOB BAND&DISP FOR CM226	FRONT OF THE PANEL	1
03074	ASM2	1	245-22609-00-07-00	SHELL KNOB POWER&MUTE FOR CM226	OUT OF THE LINING KNOB LOUD&POWER	1
03074	ASM2	1	245-22610-00-07-00	SHELL KNOB NEXT FOR CM226	OUT OF THE LINING KNOB LOUD&POWER	2
03074	ASM2	1	245-22611-00-07-00	SHELL KNOB TA FOR CM226	OUT OF THE LINING KNOB LOUD&POWER	1
03074	ASM2	1	245-22612-00-07-00	SHELL KNOB PTY FOR CM226	OUT OF THE LINING KNOB LOUD&POWER	1
03074	ASM2	1	247-22601-00-08-00	LENS OF CM226/RDS	FRONT OF THE PANEL	1
03074	ASM2	1	253-22600-00-05-00	ORNAMENT RING FOR CM226	FRONT OF THE PANEL	1
03074	ASM2	1	253-22601-00-05-00	ORNAMENT RIB FOR CM226	INSIDE OF THE PANEL	1
03074	ASM20	1	335-20301-00-10-00	LCD-COVER	FRONT OF THE LCD	1
03074	ASM20	1	289-CM203-00-00-10	LCD BACKLIGHT	BACK OF THE LCD	1
03074	ASM20	1	580-20301-00-00-01	ZEBRA STRIP	INSIDE OF THE LCD COVER	1

03074	ASM21	1	384-CM206-01-15-6E	15PIN SOCKET FEMALE DSTF-15-3-T	CON	1
03074	ASM21	1	468-ECB11-10-06-00	ECB11(7X5)(PV)S14.5	ENVOL	1
03074	ASM21	1	485-3V37J-00-00-02	ZENER DIODE 3V3 1/2W	ZD5~D7	3
03074	ASM21	1	105-CM700-02-11-00	CM700 LCD	LCD1	1
03074	ASM21	1	485-6V87J-00-00-02	ZENER DIODE 6.8V 1/2W	ZD1~ZD4	4
03074	ASM21	1	481-N4148-CF-50-12	DIODE IN4148 1/2W	D1	1
03074	ASM22	1	100-LC758-23-E0-0G	IC LC75823E LCD DRIVE	IC1	1
03074	ASM22	1	401-1101E-11-L0-12	KEY SWITCH 4.3MM	SW101~114	14
03074	ASM22	1	410-22100-00-10-R4	LED 2.2V RED SMT 0603	LED1~20	20
03074	ASM22	1	442-102FK-00-00-0W	CC 1000PF/50V ±10% SMT 0603(X7R)	C1	1
03074	ASM22	1	442-105DZ-00-00-0V	CC 1µF/16V +80% -20% SMT 0805	C2,C3,C104	3
03074	ASM22	1	460-102BJ-00-01-0W	RMF 1KΩ 1/16W ±5% SMT 0603	R8,R15	2
03074	ASM22	1	460-103BJ-00-01-0W	RMF 10KΩ 1/16W ±5% SMT 0603	R16,R2,R44	3
03074	ASM22	1	460-152BJ-00-01-0W	RMF 1K5Ω 1/16W ±5% SMT 0603	R9,R35	2
03074	ASM22	1	460-181BJ-00-01-0W	RMF 180Ω 1/16W ±5% SMT 0603	R3	1
03074	ASM22	1	460-220BJ-00-01-0W	RMF 22Ω 1/16W ±5% SMT 0603	R18~21	4
03074	ASM22	1	460-221BJ-00-01-0W	RMF 220Ω 1/16W ±5% SMT 0603	R4	1
03074	ASM22	1	460-222BJ-00-01-0W	RMF 2K2Ω 1/16W ±5% SMT 0603	R10	1
03074	ASM22	1	460-331BJ-00-01-0W	RMF 330Ω 1/16W ±5% SMT 0603	R5,R36	2
03074	ASM22	1	460-332BJ-00-01-0W	RMF 3K3Ω 1/16W ±5% SMT 0603	R11	1
03074	ASM22	1	460-4710J-00-01-0V	RMF 470Ω 1/10W ±5% SMT 0805	R25~34	10
03074	ASM22	1	460-471BJ-00-01-0W	RMF 470Ω 1/16W ±5% SMT 0603	R6,R14	2
03074	ASM22	1	460-473BJ-00-01-0W	RMF 47KΩ 1/16W ±5% SMT 0603	R1,R12~13,R22,R23,R41	6
03074	ASM22	1	460-681BJ-00-01-0W	RMF 680Ω 1/16W ±5% SMT 0603	R7,R46	2
03074	ASM22	1	460-822BJ-00-01-0W	RMF 8K2Ω 1/16W ±5% SMT 0603	R17	1
03074	ASM22	1	490-39040-00-00-2H	TR 3904(SMT SOT-23)NPN	Q1	1
03074	ASM22	1	490-343TK-00-00-2H	TR DTC343TK(SMT SOT-23)	Q2~4	3
03074	ASM22	1	460-1510J-00-01-0V	RMF 150Ω 1/10W ±5% SMT 0805	R24	1
03074	ASM22	1	460-391BJ-00-01-0W	RMF 390Ω 1/16W ±5% SMT 0603	R37	1
03074	ASM22	1	460-0R0BJ-00-01-0W	RMF 0Ω 1/16W ±5% SMT 0603	R48,R39,R50	3
03074	ASM22	1	401-11076-11-L0-00	KEY SWITCH 2.5MM TS1107GS-2	SW115~119	5

03074	ASM22	1	112-CM226-KB-2G-00	CM226KB D/S 166X41X1.2MM		1
03074	ASM22	1	460-512BJ-00-01-0W	RMF 5K1Ω 1/16W ±5% SMT 0603	R40	1
03074	ASM22	1	460-684BJ-00-01-0W	RMF 680KΩ 1/16W ±5% SMT 0603	R42	1
03074	ASM22	1	460-334BJ-00-01-0W	RMF 330KΩ 1/16W ±5% SMT 0603	R43	1
03074	ASM22	1	460-272BJ-00-01-0W	RMF 2K7Ω 1/16W ±5% SMT 0603	R45	1
03074	ASM22	1	444-226BM-00-11-0Q	CT 22μF/6.3V ±20% SMT 1206	C105	1
03074	CHASS1	1	180-10008-00-10-01	LASER WARNING LABEL		1
03074	CHASS1	1	225-20603-00-00-00	SPONGE FOR FPC	TO SERVO BOARD	1
03074	CHASS1	1	335-20608-00-00-00	BRACKET KOMEC DECK BACK	BACK OF DECK	1
03074	CHASS1	1	335-20609-00-00-01	BRACKET KOMEC DECK FRONT	FRONT OF DECK	1
03074	CHASS1	1	360-01000-00-00-00	CD DECK CDX100(KOMEC)		1
03074	CHASS1	1	435-20040-54-21-00	SCREW M2.0X4.0 PW	SB TO DECK	4
03074	CHASS1	1	435-26050-04-10-00	SCREW PTS2605	BRACKET TO DECK	5
03074	CHASS11	1	112-CM206-SB-2G-00	CM206 MP3 SERVO PCB D/S 112*93.5*1.2MM		1
03074	CHASS11	1	214-AWG30-3P-10-CM	CM 3P*100MM CONNECTION WIRE		1
03074	CHASS11	1	218-01000-00-25-00	25PIN FFC 1.25MM L=100MM		1
03074	CHASS11	1	384-CM206-01-04-6E	PH-4AW PH=2.0MM CONNECTOR	CON903	1
03074	CHASS11	1	401-CM206-00-00-01	CD DETECTOR CDX100	SW901	1
03074	CHASS11	1	410-IR928-6C-00-00	PHOTOTRANSISTOR IR928-6C	LED901,LED902	2
03074	CHASS11	1	449-106DM-FG-21-2E	CE 10μF/16V ±20% 4X5 105°C	CE903,CE905~906,CE908~909	5
03074	CHASS11	1	449-107DM-JG-21-6E	CE 100μF/16V ±20% 6.3X5 105°C	CE907,CE910~912	4
03074	CHASS11	1	449-475FM-FG-21-2E	CE 4.7μF/50V ±20% 4X5 105°C	CE901	1
03074	CHASS11	1	449-476DM-GG-21-4E	CE 47μF/16V ±20% 5X5 105°C	CE902,CE904	2
03074	CHASS11	1	520-16934-GP-0E-09	XT 16.9344MHZ(-10°C~+60°C)	XT901	1
03074	CHASS12	1	100-04X04-00-00-0G	IC DRAM 4MX4 TSOP 3.3V	IC905	1
03074	CHASS12	1	100-09226-00-00-0G	IC.S1L9226	IC901	1
03074	CHASS12	1	100-09259-00-00-0G	IC.KA9259D	IC904	1
03074	CHASS12	1	100-09276-00-00-0G	IC S5L9276	IC903	1
03074	CHASS12	1	100-09290-00-00-0G	IC.S5L9290	IC902	1
03074	CHASS12	1	384-CM206-01-17-6E	17PIN FPC SOCKET 1.0MM	CON901	1
03074	CHASS12	1	442-102FK-00-00-0W	CC 1000PF/50V ±10% SMT 0603(X7R)	C904,C943	2

03074	CHASS12	1	442-103FK-00-00-0W	CC 0.01 μ F/50V \pm 10% SMT 0603(X7R)	C905,C913~914,C924,C926~927,C948,C993	8
03074	CHASS12	1	442-104DZ-00-00-0W	CC 0.1 μ F/16V +80% -20% SMT 0603	C906~8,C910~911,C920~3,C925,C929,C934~5,C941 ,C944~7,C949~950,C991	21
03074	CHASS12	1	442-152FK-00-00-0W	CC 1500PF/50V \pm 10% SMT 0603	C936~937	2
03074	CHASS12	1	442-153FM-00-00-0W	CC 0.015 μ F/50V \pm 20% SMT 0603	C928	1
03074	CHASS12	1	442-222FK-00-00-0W	CC 2200PF/50V \pm 10% SMT 0603(X7R)	C909,C918,C930~931	4
03074	CHASS12	1	442-224DZ-00-00-0W	CC 0.22 μ F/16V +80% -20% SMT 0603	C916	1
03074	CHASS12	1	442-330FJ-00-00-0W	CC 33PF/50V \pm 5% SMT 0603	C938~939	2
03074	CHASS12	1	442-333FM-00-00-0W	CC 0.033 μ F/50V \pm 20% SMT 0603	C932	1
03074	CHASS12	1	442-391FK-00-00-0W	CC 390PF/50V \pm 10% SMT 0603	C917,C919	2
03074	CHASS12	1	442-472FK-00-00-0W	CC 4700PF/50V \pm 10% SMT 0603	C903	1
03074	CHASS12	1	442-474DZ-00-00-0W	CC 0.47 μ F/16V +80% -20% SMT 0603	C912,C933	2
03074	CHASS12	1	442-4P7FD-00-00-0W	CC 4.7PF/50V \pm 0.5P SMT 0603	C901	1
03074	CHASS12	1	442-683FM-00-00-0W	CC 0.068 μ F/50V \pm 20% SMT 0603	C915	1
03074	CHASS12	1	442-821FK-00-00-0W	CC 820PF/50V \pm 10% SMT 0603	C940	1
03074	CHASS12	1	442-8P2FD-00-00-0W	CC 8.2PF/50V \pm 0.5P SMT 0603	C902	1
03074	CHASS12	1	460-0R0BJ-00-01-0W	RMF 0 Ω 1/16W \pm 5% SMT 0603	R914	1
03074	CHASS12	1	460-100BJ-00-01-0W	RMF 10 Ω 1/16W \pm 5% SMT 0603	R917	1
03074	CHASS12	1	460-102BJ-00-01-0W	RMF 1K Ω 1/16W \pm 5% SMT 0603	R925,R933,R936,R991	4
03074	CHASS12	1	460-103BJ-00-01-0W	RMF 10K Ω 1/16W \pm 5% SMT 0603	R905,R943,R993~994	4
03074	CHASS12	1	460-104BJ-00-01-0W	RMF 100K Ω 1/16W \pm 5% SMT 0603	R934,R937	2
03074	CHASS12	1	460-105BJ-00-01-0W	RMF 1M Ω 1/16W \pm 5% SMT 0603	R932,R938,R996~998	5
03074	CHASS12	1	460-124BJ-00-01-0W	RMF 120K Ω 1/16W \pm 5% SMT 0603	R995	1
03074	CHASS12	1	460-151BJ-00-01-0W	RMF 150 Ω 1/16W \pm 5% SMT 0603	R941	1
03074	CHASS12	1	460-153BJ-00-01-0W	RMF 15K Ω 1/16W \pm 5% SMT 0603	R908,R929	2
03074	CHASS12	1	460-154BJ-00-01-0W	RMF 150K Ω 1/16W \pm 5% SMT 0603	R907,R922~923	3
03074	CHASS12	1	460-184BJ-00-01-0W	RMF 180K Ω 1/16W \pm 5% SMT 0603	R912	1
03074	CHASS12	1	460-203BJ-00-01-0W	RMF 20K Ω 1/16W \pm 5% SMT 0603	R928	1
03074	CHASS12	1	460-204BJ-00-01-0W	RMF 200K Ω 1/16W \pm 5% SMT 0603	R926	1
03074	CHASS12	1	460-223BJ-00-01-0W	RMF 22K Ω 1/16W \pm 5% SMT 0603	R909,R945~950	7
03074	CHASS12	1	460-224BJ-00-01-0W	RMF 220K Ω 1/16W \pm 5% SMT 0603	R902,R910	2

03074	CHASS12	1	460-274BJ-00-01-0W	RMF 270KΩ 1/16W ±5% SMT 0603	R906	1
03074	CHASS12	1	460-2R2BJ-00-01-0W	RMF 2Ω 1/16W ±5% SMT 0603	R989	1
03074	CHASS12	1	460-303BJ-00-01-0W	RMF 30KΩ 1/16W ±5% SMT 0603	R911	1
03074	CHASS12	1	460-332BJ-00-01-0W	RMF 3K3Ω 1/16W ±5% SMT 0603	R931	1
03074	CHASS12	1	460-333BJ-00-01-0W	RMF 33KΩ 1/16W ±5% SMT 0603	R956~957,R963~966	6
03074	CHASS12	1	460-392BJ-00-01-0W	RMF 3K9Ω 1/16W ±5% SMT 0603	R903	1
03074	CHASS12	1	460-472BJ-00-01-0W	RMF 4K7Ω 1/16W ±5% SMT 0603	R951~955,R990	6
03074	CHASS12	1	460-473BJ-00-01-0W	RMF 47KΩ 1/16W ±5% SMT 0603	R904,R916,R940,R942,R944,R958~962	10
03074	CHASS12	1	460-682BJ-00-01-0W	RMF 6K8Ω 1/16W ±5% SMT 0603	R901,R992	2
03074	CHASS12	1	460-683BJ-00-01-0W	RMF 68KΩ 1/16W ±5% SMT 0603	R915,R918~921,R913	6
03074	CHASS12	1	460-820BJ-00-01-0W	RMF 82Ω 1/16W ±5% SMT 0603	R924	1
03074	CHASS12	1	460-822BJ-00-01-0W	RMF 8K2Ω 1/16W ±5% SMT 0603	R930	1
03074	CHASS12	1	490-39060-00-00-2H	TR 3906(SMT SOT-23)PNP	Q901	1
03074	CHASS3	1	163-10000-04-07-00	REMOTE CELL POLY BAG UNIT		1
03074	CHASS3	1	590-8605S-GK-40-61	REMOTE-CRM HEADER(IRM2038F4)	REM1	1
03074	CHASS3	1	225-20602-00-00-00	REMOTE CONTROL SPONGE		1
03074	CHASS3	1	225-20601-00-00-00	SHADE SPONGE		1
03074	CHASS3	1	567-20300-00-31-00	REMOTE CONTROL FORYOU		1
03074	CHASS4	1	111-CM206-CB-11-00	FILTER PCB S/S 36*30*1.6MM		1
03074	CHASS4	1	251-20601-00-00-00	FILTER BOX		1
03074	CHASS4	1	384-CM206-02-20-6E	20PIN PWR/SPK WIRE EST-KNT-20-05		1
03074	CHASS4	1	512-CM206-00-00-01	CHOKE 470μH(CM206)	L801	1
03074	PACKING	1	130-20600-00-11-00	CARTON		0,17
03074	PACKING	1	134-10101-00-00-00	BROWN BOX		1
03074	PACKING	1	161-10101-00-00-01	PE FOAM L		1
03074	PACKING	1	161-10102-00-00-01	PE FOAM R		1
03074	PACKING	1	163-10000-05-08-10	POLY BAG SCREW		1
03074	PACKING	1	163-10000-08-15-10	POLY BAG SIDE LOCK		1
03074	PACKING	1	163-10000-10-26-10	POLY BAG RIM		3
03074	PACKING	1	163-10000-16-25-10	POLY BAG MANUAL		1
03074	PACKING	1	163-10000-28-35-10	POLY BAG UNIT		1

03074	PACKING	1	180-10002-00-10-00	SERIAL NO.LABEL	FRAME,WARRANTY CARD OF MANUAL;GIFT BOX	3
03074	PACKING	1	180-10003-00-10-01	QC PASS LABEL	BOTTOM OF FRAME	1
03074	PACKING	1	180-10009-00-10-00	WHITE LABEL		1
03074	PACKING	1	180-10011-00-10-00	WARRANTY LABEL (ENGLISH)	JOINT OF TOP COVER & FRAME	1
03074	PACKING	1	180-20600-00-02-00	E1 LABEL		1
03074	PACKING	1	180-30102-00-10-00	SCREW WARNNING LABEL(ENGLISH)	DECK	2
03074	PACKING	1	225-10001-01-0A-00	RUBBER		1
03074	PACKING	1	229-10001-00-00-00	SPONGE FOR PANEL BOX		2
03074	PACKING	1	251-10000-04-00-00	PANEL BOX		1
03074	PACKING	1	310-10001-00-0A-00	POLE		1
03074	PACKING	1	335-10005-00-0A-00	SIDE LOCK		2
03074	PACKING	1	435-50060-70-10-00	SCREW M5.0X6.0	FRAME T/N	4
03074	PACKING	1	131-22600-00-10-00	GIFT BOX FOR CM226		1
03074	PACKING	1	170-22600-00-10-00	MANUAL FOR CM226		1
03074	PACKING	1	180-22600-00-10-00	MODEL LABEL OF CM226	TOP COVER	1
03074	SUNDRY	1	220-20605-00-00-00	WASHER ϕ 3.0*0.6MM		4
03074	SUNDRY	1	910-20000-00-00-00	PP TAPE(PVC)2"		1
03074	SUNDRY	1	936-10003-00-00-00	TRANSPARENT GLUE		1
03074	SUNDRY	1	940-10001-00-00-00	MOISTUREPROOF PELLET		1
03074	SUNDRY	1	950-10200-00-00-00	SOLDER WIRED 1.02MM		1
03074	SUNDRY	1	951-20600-00-00-00	STANNUM SLURRY		1
03074	SUNDRY	1	955-10001-00-00-00	HEATSINK OIL		1
03074	SUNDRY	1	960-10001-00-00-00	GREASE		1