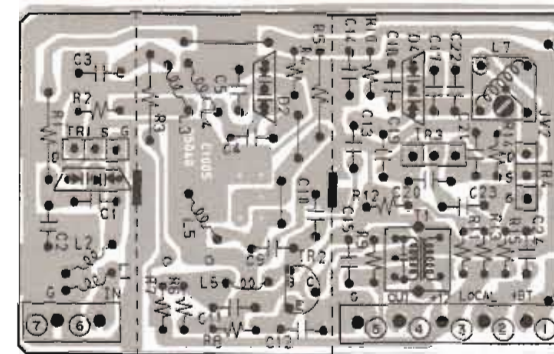


AKAI

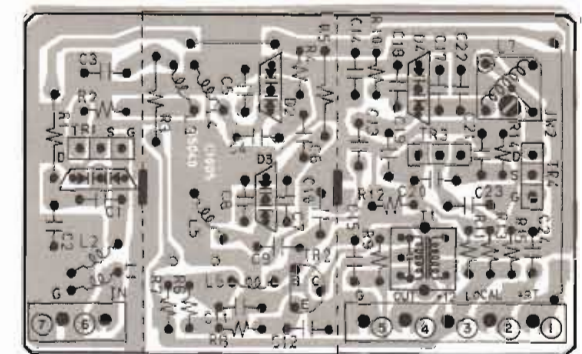
MODEL AT-A102/L

SCHEMATIC DIAGRAM AND PC BOARD

1. FRONT END PCB, POWER PCB, POWER SUPPLY PCB, TUNER PCB	2
2. AT-A102 SCHEMATIC DIAGRAM	3
3. AT-A102L SCHEMATIC DIAGRAM	4
4. FRONT END PCB, POWER PCB, POWER SUPPLY PCB, TUNER PCB	5
5. AT-A102 BLOCK DIAGRAM	6

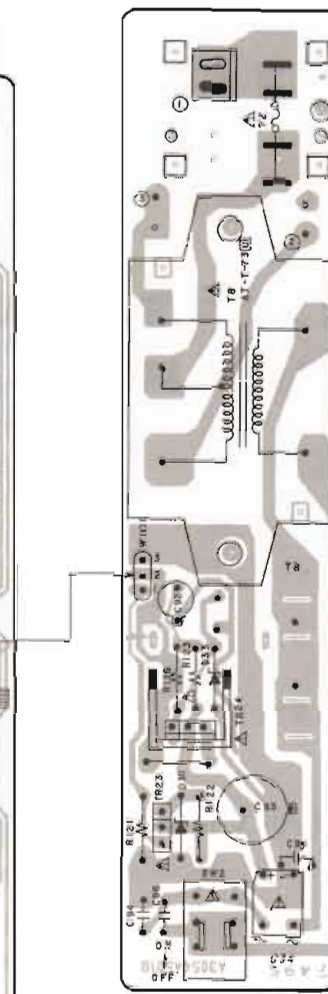
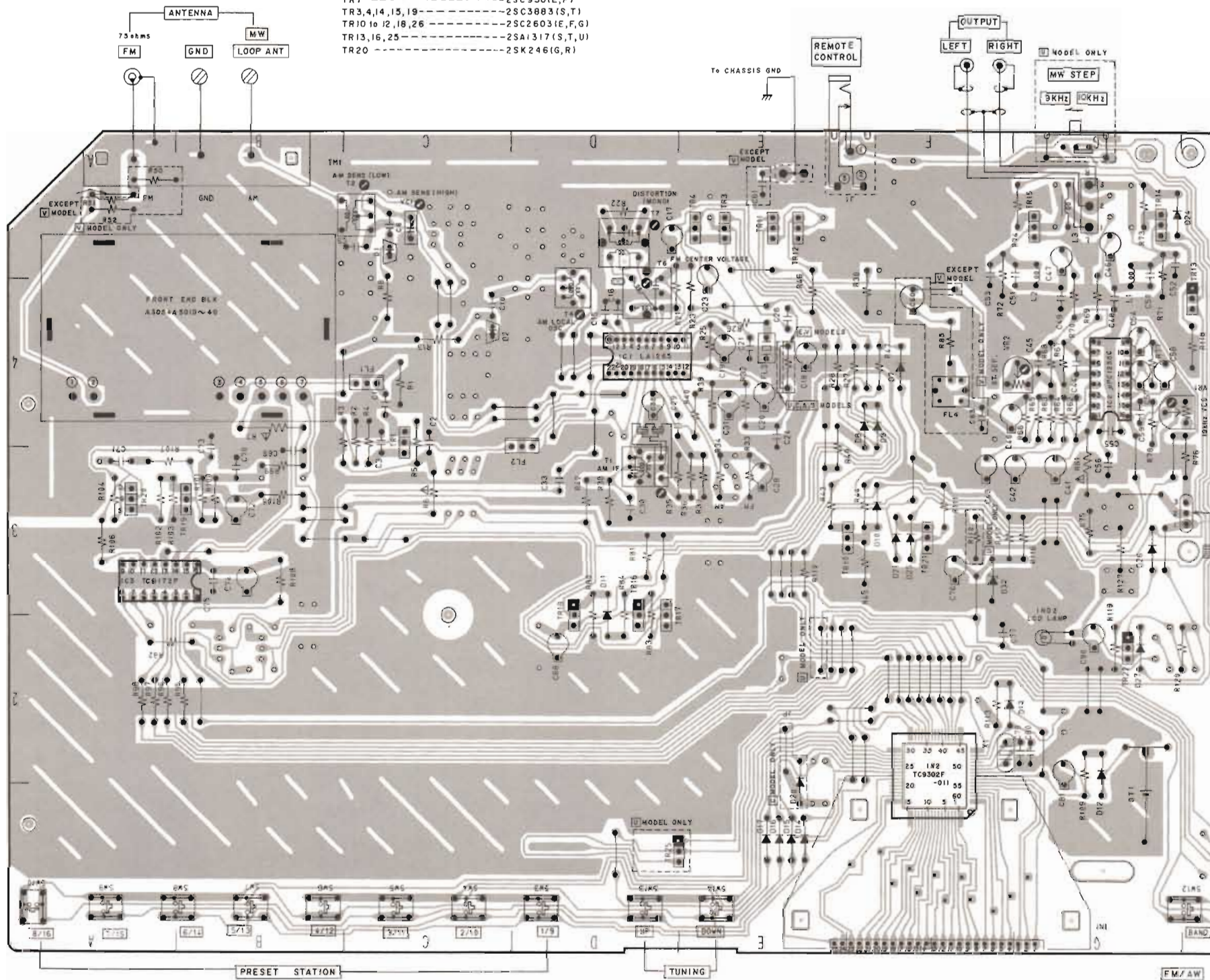


FRONT END PCB C1005B5040

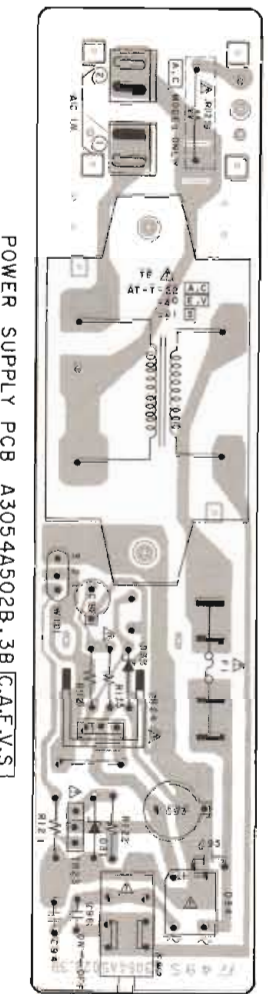


FRONT END PCB C1005B5040
 MODEL ONLY

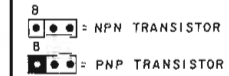
- TR1 -----2SC930(E,F)
- TR3,4,14,15,19-----2SC3883(S,T)
- TR10 to 12,18,26-----2SC2603(E,F,G)
- TR13,16,25-----2SA1317(S,T,U)
- TR20 -----2SK246(G,R)



POWER PCB
 A3054A501B



POWER SUPPLY PCB A3054A502B, 3B CAE V.S.

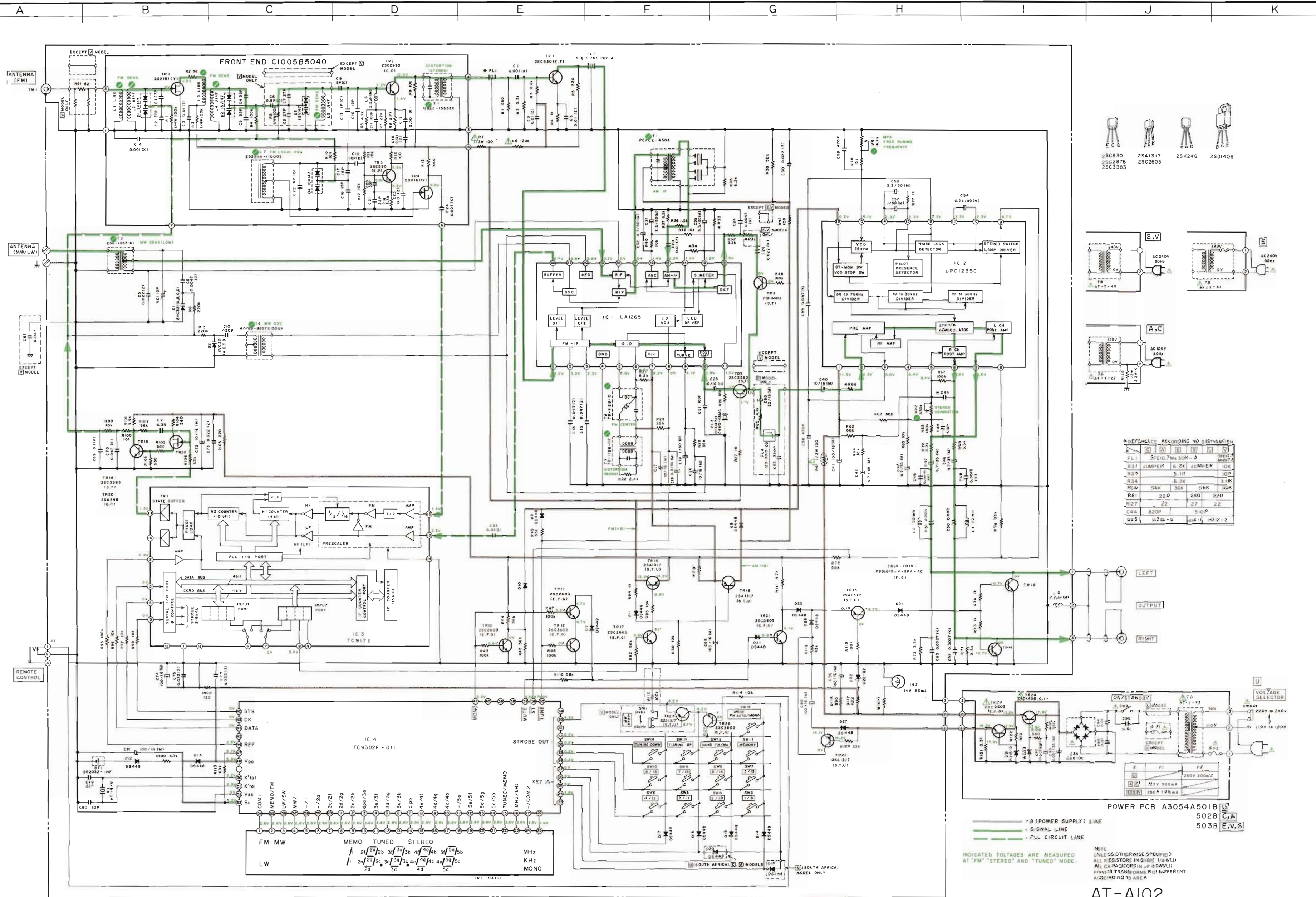


LOCATION OF COMPONENTS	
IC's	TR's
IC1---D4	TR1---C3,4
IC2---G4	TR3---E5
IC3---A,B,3	TR4---E5
IC4---F1,2	TR10---E,F,3
	TR11---E5
	TR12---E5
	TR13---H4
	TR14---G5
	TR15---G5
	TR16---D2,3
	TR17---D2,3
	TR18---D2,3
	TR19---B3
	TR20---A3
	TR21---F3
	TR22---G2
	TR25---H1
	TR26---D,E,1

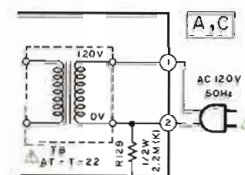
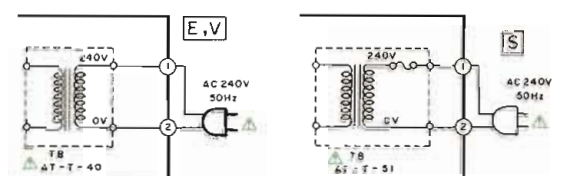


TUNER PCB A3054A501A
 502A C.A.
 503A E.V.S.

WARNING: Δ INDICATES SAFETY CRITICAL COMPONENTS FOR CONTINUED SAFETY. REPLACE SAFETY CRITICAL COMPONENTS ONLY WITH MANUFACTURER'S RECOMMENDED PARTS.
 AVERTISSEMENT: Δ IL INDIQUE LES COMPOSANTS CRITIQUES DE SECURITE. POUR MAINTENIR LE DEGRE DE SECURITE DE L'APPAREIL, NE REMPLACER QUE DES PIECES RECOMMANDEES PAR LE FABRICANT.



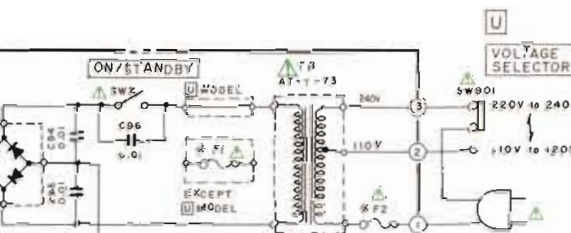
- 25C930
- 25C2878
- 25C3383
- 25A1317
- 25C2603
- 25K246
- 25D1406



*REFERENCE ACCORDING TO DISTINCTION

REF.	TYPE	VALUE	REF.	TYPE	VALUE
FL1	SPF10.7MHz	30K-A	TR19	25C3383	15-T1
R31	JUMPER	0.2K	JUMPER	10K	
R33		5.1K		10K	
R34		5.2K		3.3K	
R35		36K		16K	
R81		240		220	
R127		22		22	
C44	820P	510P			
DS3	H212-a	H212-2			

LEFT
OUTPUT
RIGHT



POWER PCB A3054A501B
502B C.A.
503B E.V.S.

— (B POWER SUPPLY) LINE
- - - (SIGNAL) LINE
... (PLL CIRCUIT) LINE

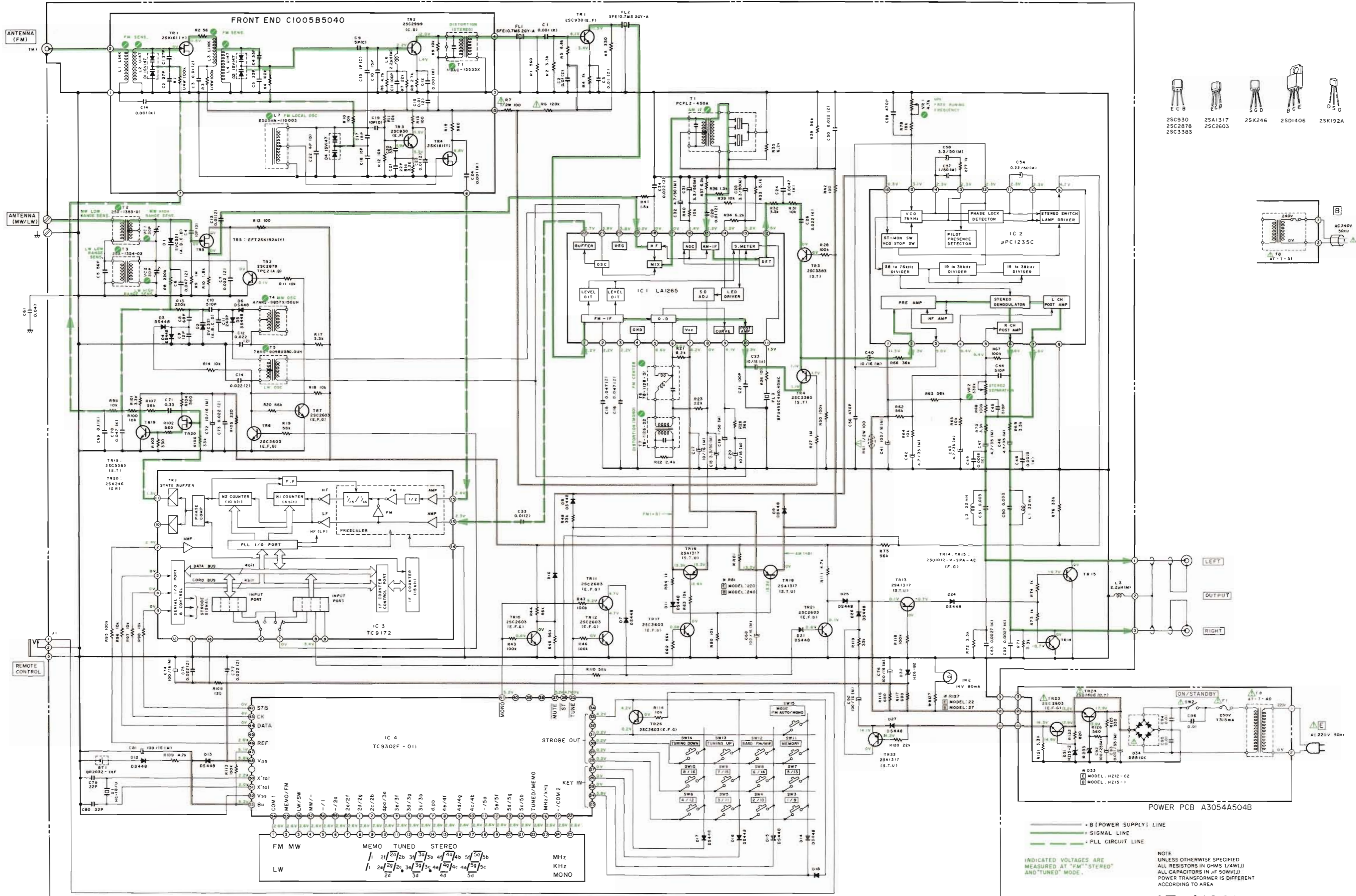
INDICATED VOLTAGES ARE MEASURED AT "FM" "STEREO" AND "TUNED" MODE.

NOTE: ONLE (S5 OTHERWISE SPECIFIED) ALL RESISTORS IN OHMS (1/4W) ALL CAPACITORS IN µF (50V) POWER TRANSFORMER IS DIFFERENT ACCORDING TO AREA.

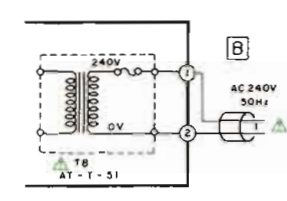
TUNER (U) PCB A3054A501A
TUNER (C) PCB A3054A502A
TUNER (E) PCB A3054A503A

AT-A102
SCHEMATIC DIAGRAM
No. 860303A

WARNING: INDICATES SAFETY CRITICAL COMPONENTS FOR CONTINUED SAFETY. REPLACE SAFETY CRITICAL COMPONENTS ONLY WITH MANUFACTURER'S RECOMMENDED PARTS.
AVERTISSEMENT: INDIQUE LES COMPOSANTS CRITIQUES DE SECURITE. NE REMPLACER QUE DES PIECES RECOMMANDEES PAR LE FABRICANT.



- 2SC930
- 2SC2876
- 2SC3383
- 2SA1317
- 2SC2603
- 2SK246
- 2SD1406
- 2SK192A



LEFT
OUTPUT
RIGHT

POWER PCB A3054A504B

— B (POWER SUPPLY) LINE
— SIGNAL LINE
— PLL CIRCUIT LINE

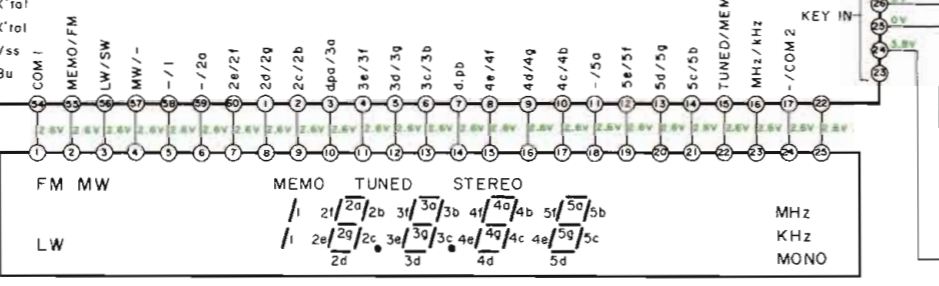
INDICATED VOLTAGES ARE MEASURED AT "FM" "STEREO" AND "TUNED" MODE.

NOTE
UNLESS OTHERWISE SPECIFIED
ALL RESISTORS IN OHMS (1/4W)
ALL CAPACITORS IN μF (50WV)
POWER TRANSFORMER IS DIFFERENT
ACCORDING TO AREA

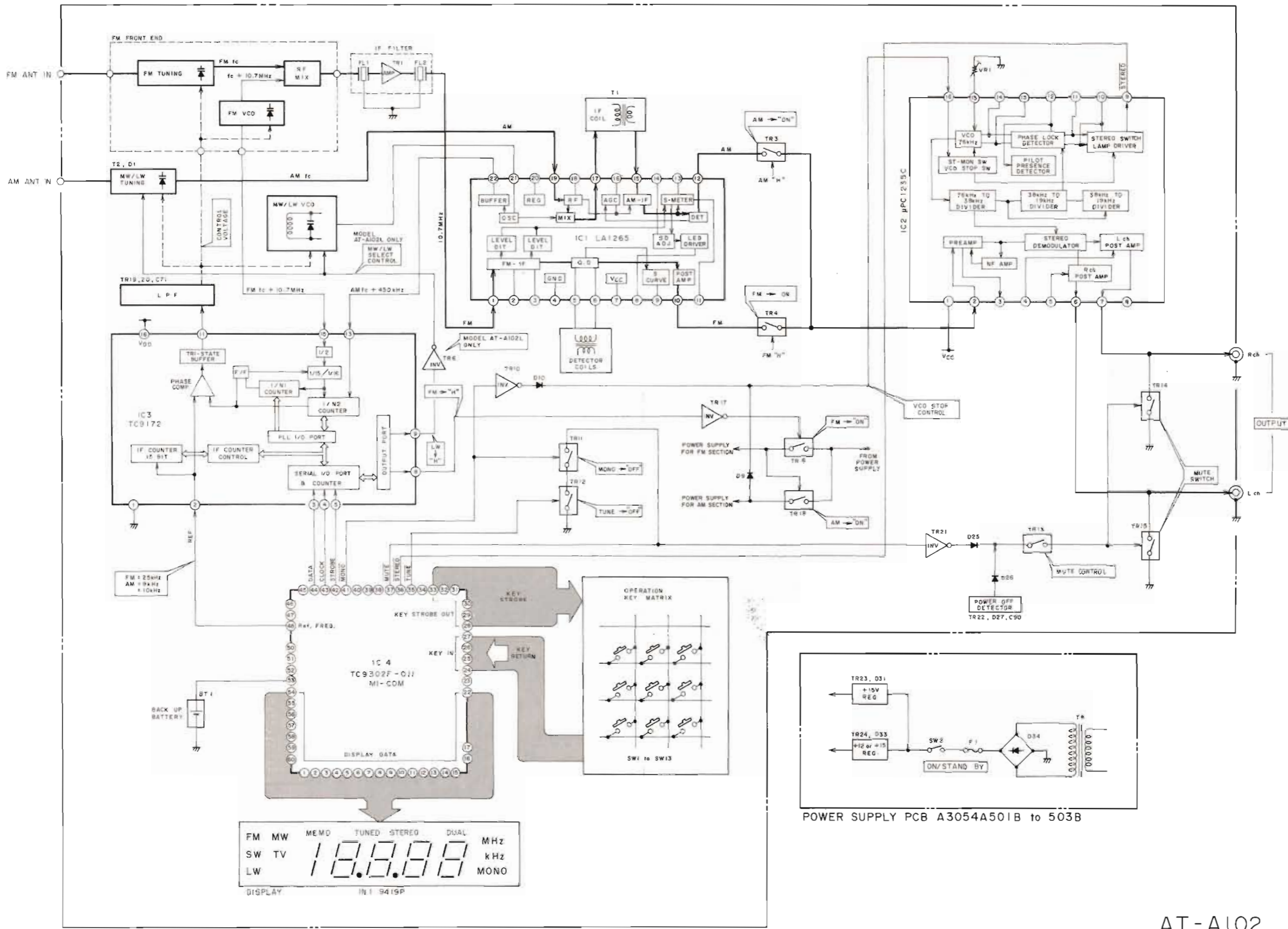
AT-A102L
SCHEMATIC DIAGRAM
No. 860304A

WARNING: INDICATES SAFETY CRITICAL COMPONENTS. FOR CONTINUED SAFETY, REPLACE SAFETY CRITICAL COMPONENTS ONLY WITH MANUFACTURER'S RECOMMENDED PARTS.
AVERTISSEMENT: ΔΔΔ INDIQUE LES COMPOSANTS CRITIQUES DE SÉCURITÉ. POUR MAINTENIR LE DEGRÉ DE SÉCURITÉ DE L'APPAREIL, NE REMPLACEZ QUE DES PIÈCES RECOMMANDÉES PAR LE FABRICANT.

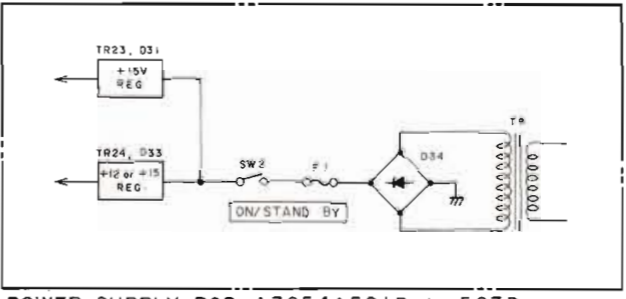
TUNER(L) PCB A3054A504A E,B



AT-A102

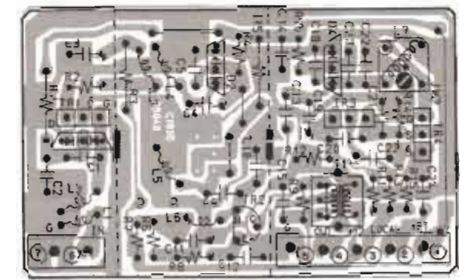


TUNER PCB A3054A501A to 503A

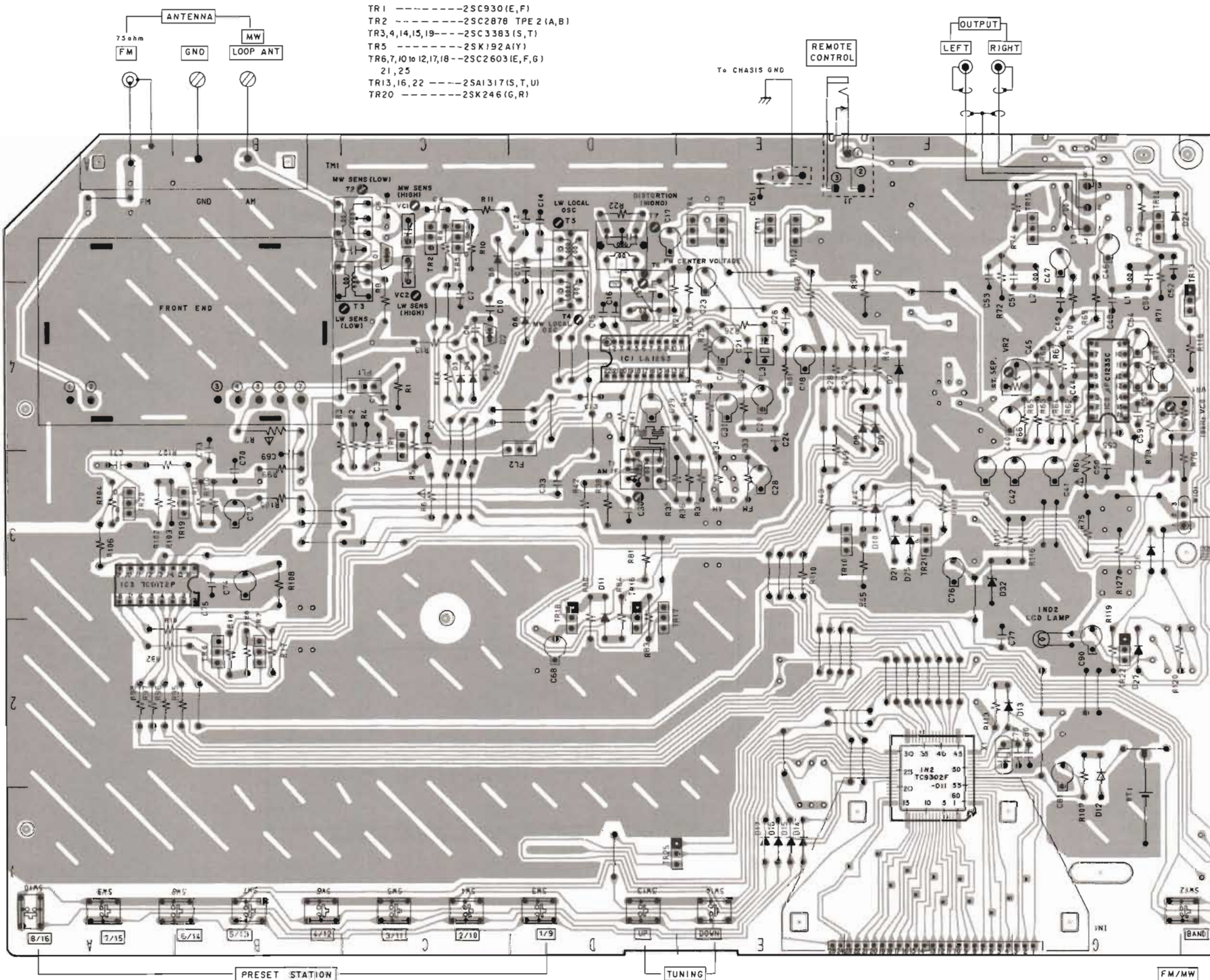


POWER SUPPLY PCB A3054A501B to 503B

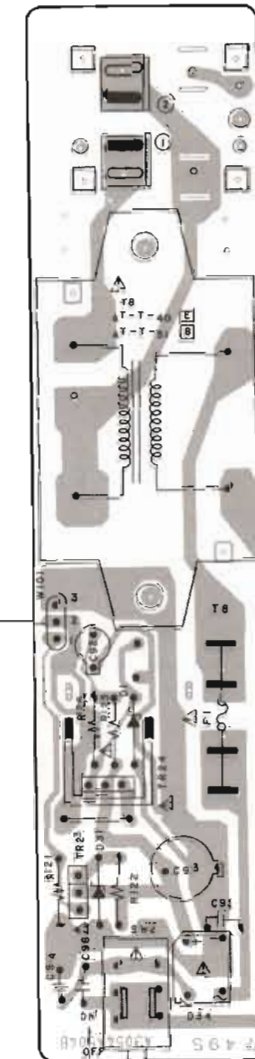
AT-A102
BLOCK DIAGRAM
No. 860302A



FRONT END PCB C1005B5040



- TR 1 -----2SC930 (E,F)
- TR 2 -----2SC2878 TPE 2 (A,B)
- TR 3,4,14,15,19---2SC3383 (S,T)
- TR 5 -----2SK192A (Y)
- TR 6,7,10,16,12,17,18---2SC2603 (E,F,G)
- 21, 25
- TR13,16, 22 ----2SA1317 (S,T,U)
- TR20 -----2SK246 (G,R)



POWER ON/STANDBY POWER PCB A3054A504B [E,B]



2SC2603



2SD1406 (O,Y)

TR 23 2SC2603 (E,F,G)

TR 24 2SD1406 (O,Y)

- IC1---D4
- IC2---G4
- IC3---A,B3
- IC4---F1,2

LOCATION OF COMPONENTS

- TR's
- TR1---C3,4
- TR2---C5
- TR3---E5
- TR4---E5
- TR5---C5
- TR6---B2
- TR7---B2
- TR10---E,F3
- TR11---E5
- TR12---E5
- TR13---H4
- TR14---G5
- TR16---D2,3
- TR17---D2,3
- TR18---D2,3
- TR19---B3
- TR20---A3
- TR21---F3
- TR22---G2
- TR25---H1
- TR26---D,E1



2SC3383
2SC2878
2SC930



2SA1317
2SC2603



2SK192A



2SK246

TUNER PCB A3054A504A

WARNING: Δ INDICATES SAFETY CRITICAL COMPONENTS FOR CONTINUED SAFETY. REPLACE SAFETY CRITICAL COMPONENTS ONLY WITH MANUFACTURER'S RECOMMENDED PARTS.
 AVERTISSEMENT: Δ ILL INDIQUE LES COMPOSANTS CRITIQUES DE SÉCURITÉ. POUR MAINTENIR LE DEGRÉ DE SÉCURITÉ DE L'APPAREIL, NE REMPLACER QUE DES PIÈCES RECOMMANDÉES PAR LE FABRICANT.