



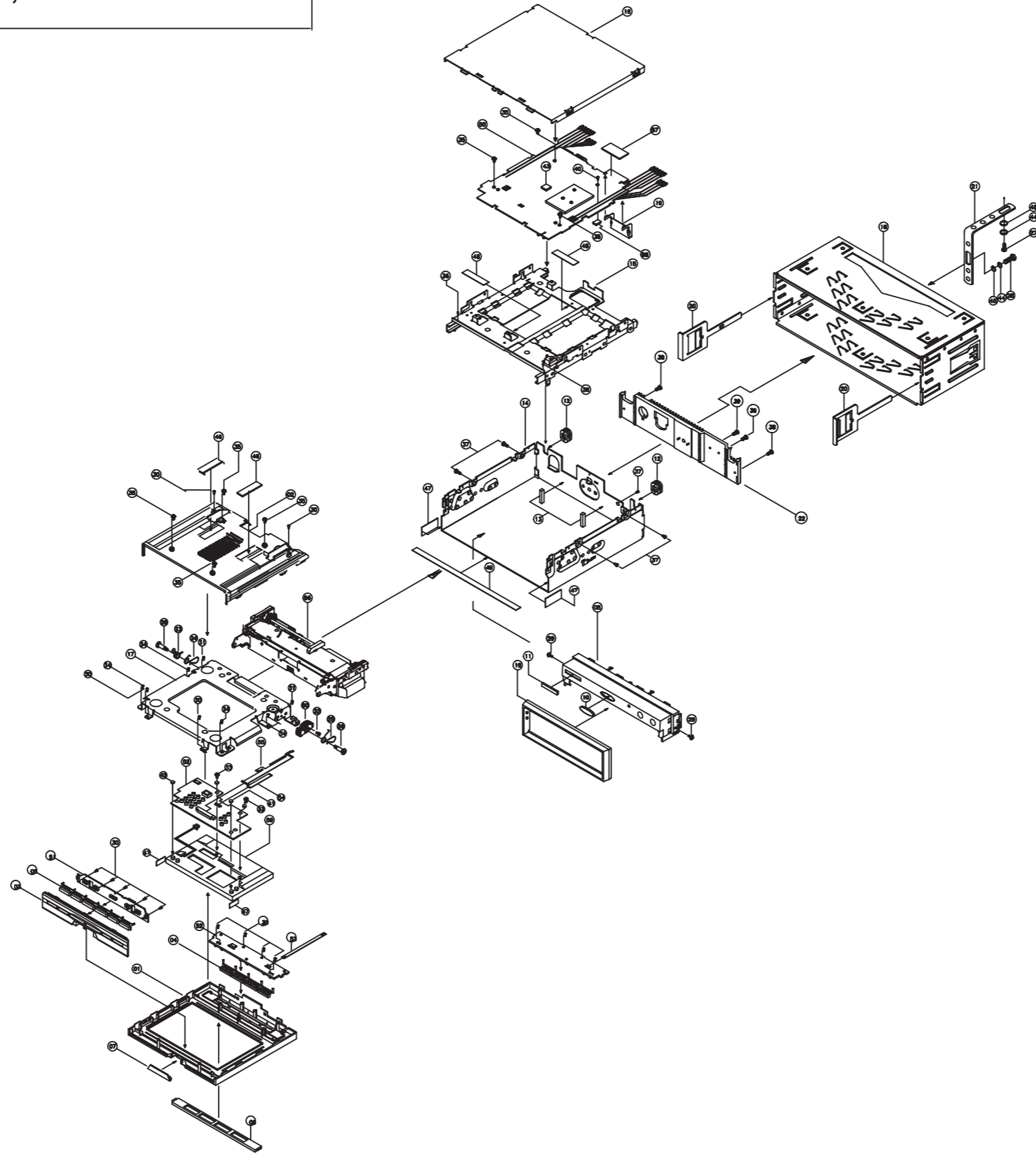
**AKAI**

**RECIVER WITH MONITOR**

Models:  
AKAI IDV-720,721

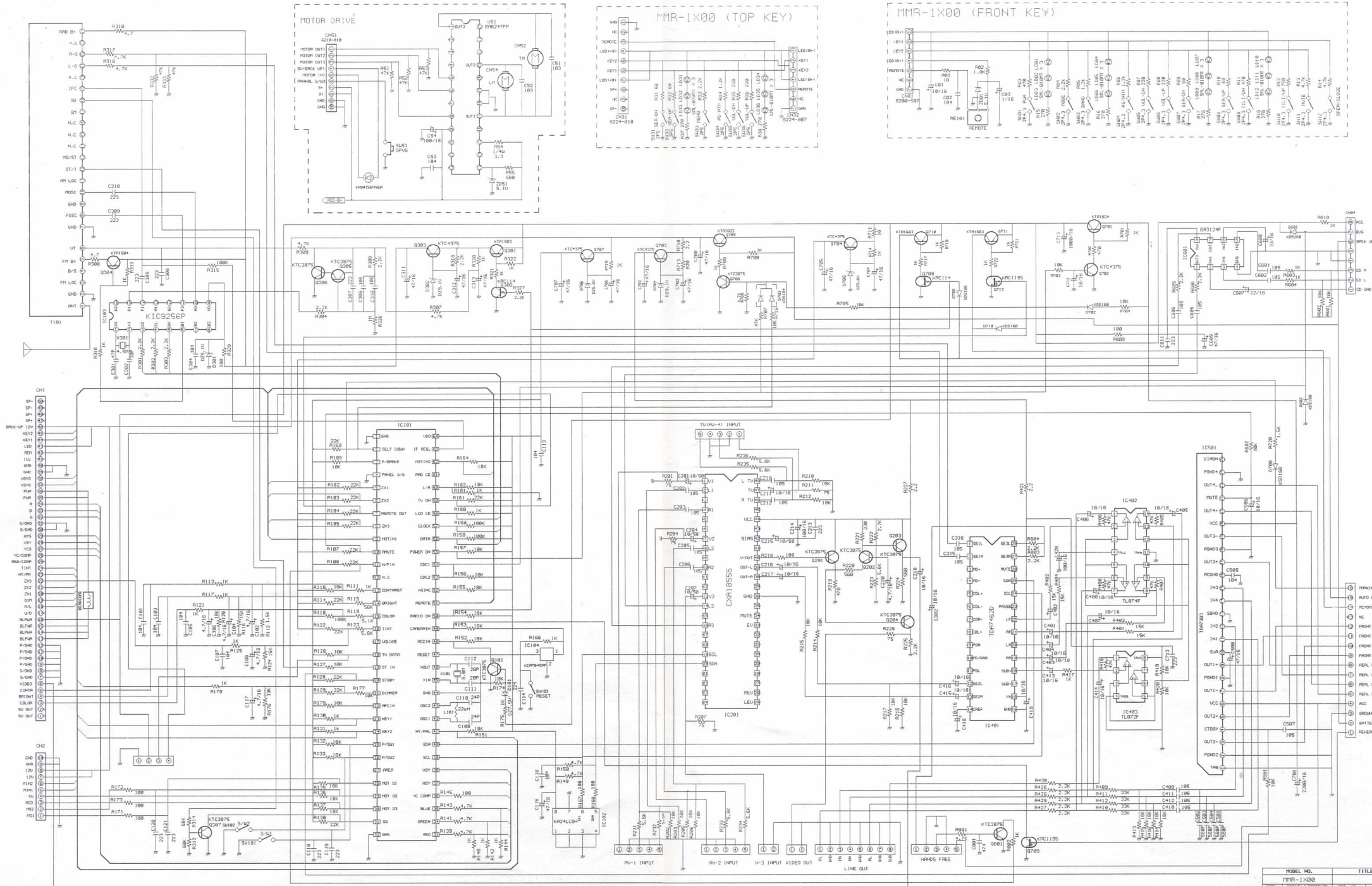
**SERVICE MANUAL**

# AKAI IDV-720,721 EXPLODED



NO	PART NO	DESCRIPTION	SPECIFICATION	QTY	REMARK	
60	MTV-1000-118	GEAR-MONITOR	Fe	1		
59	MTV-1000-	TFT LCD	7" WIDE COLOR PRIMEVIEW	1		
58	MTV-1000-70A	CUSHION-TR	RUBBER 40	1		
57	MTV-1000-89A	FELT-IC	FELT 15X35X0.5 BLACK	1		
56	MTV-1000-ASSY	TILT MECHANISM ASSY	ASSY	1		
55	MTV-1000-82A	FPC-50	ASSY	1		
54	MTV-1000-	FPC-50	ASSY	1		
53	MTV-1000-	FPC-50	ASSY	1		
52	MTV-1000-73A	PCB-TOP	FR-4(ASSY)	1		
51	MTV-1000-74A	PCB-FRONT	FR-4(ASSY)	1		
50	MTV-1000-71A	PCB-MAIN	FR-4(ASSY)	1		
49	MTV-1000-84A	FELT-MAN2	14X174X0.3	1		
48	MTV-1000-83A	FELT-BASE	13X42X0.3	2	MAN	
47	MTV-1000-83A	FELT-MAN1	16X50X0.3	4	MON	
46	MTV-1000-84A	CUSHION-BOTTOM	ARTIFICIAL SKIN GRAY	2		
45	MTV-1000-	WASHER-PLANE	Ø5 FxW	2		
44	MTV-1000-	WASHER-SPRING	Ø5 FxW	2		
43	MTV-1000-88A	CUSHION-RUBBER	RUBBER 40	1		
42	MTV-1000-10A	BUSHING-6	ABS d=6.3 D=8.3 T=2.3	1		
41	MTV-1000-09A	BUSHING-5	ABS d=5.3 D=7.3 T=2.3	1		
40	MTV-1000-	SCREW-MACHINE	BH M2.6X6 FxW	1		
39	MTV-1000-	SCREW-MACHINE	BH M3X12 FxW	2		
38	MTV-1000-	SCREW-TAPPING	BHT M2 0.3X10 FxT	2		
37	MTV-1000-	SCREW-TAPPING	BHT3 Ø3X5 FxT	5		
36	MTV-1000-	SCREW-MACHINE	CH M2.6X6 FxT/WASHER	2		
35	MTV-1000-	SCREW-TAPPING	BHT2 Ø2.5X4 FxT	7		
34	MTV-1000-	SCREW-TAPPING	BHT2 Ø2.5X4 FxT	4		
33	MTV-1000-	SCREW-TAPPING	BHT3 Ø2.5X3 FxT/WASHER	2		
32	MTV-1000-	SCREW-TAPPING	BHT3 Ø2X8 FxT	1		
31	MTV-1000-	SCREW-TAPPING	BHT2 Ø2X5 FxT	2		
30	MTV-1000-	SCREW-TAPPING	BHT2 Ø2X8 FxT	13		
29	MTV-1000-	SCREW-TAPPING	BHT3 Ø2X3.5 FxT/WASHER	2		
28	MTV-1000-	SCREW-MACHINE	HEX-M6X16 FxW	1		
27	MTV-1000-	SCREW-TAPPING	PH4-M6X16 FxW	1		
26	MTV-1000-251	SHAFT-SCREW	SHRCH20A	2		
25	MTV-1000-208	SPRING-MONITOR(R)	SUS304 WPB	1		
24	MTV-1000-205	SPRING-MONITOR(L)	SUS304 WPB	1		
23	MTV-1000-204	SPRING-ANGLE	SWP-B	1		
22	MTV-1000-33A	HEAT SINK-MAN	AI SEND BRAST	1		
21	MTV-1000-	REAR MOUNT STRAP	ECl	1		
20	MTV-1000-032A	KEY	ECl	2		
19	MTV-1000-41A	BRACKET-7381	ECl	1		
18	MTV-1000-031A	CASE-HALF	ECl	1		
17	MTV-1000-004	CHASSIS-MONITOR	EOCHSP 40R	1		
16	MTV-1000-002B	TOP COVER	EOCHSP 40R	1		
15	MTV-1000-ASSY	CHASSIS-BASE ASSY	ASSY	1		
14	MTV-1000-001	CHASSIS-MAN	EOCHSP 40R	1		
13	MTV-1000-85A	CUSHION TILT	EPDM BLACK 21X3X15	2		
12	MTV-1000-122	STOPPER-WIRE(ØP)	PP BLACK	2		
11	MTV-1000-87A	NAME PLATE	PC SILK DOUBLE FACE TAPE	1		
10	MTV-1000-86A	INLAY	PC SILK DOUBLE FACE TAPE	1		
09	MTV-1000-11A	TRIM OUT	ABS-XR(401) NORY	1		
08	MTV-1000-04A	TRIM COVER	ABS-XR(401) NORY	1		
07	MTV-1000-08A	WINDOW-REMOCON	PC GE121R-21051	1		
06	MTV-1000-07A	WINDOW-TOP	PMMA SMOG BLUE SILK	1		
05	MTV-1000-06A	BUTTON-FRONT	PC CLEAR	1		
04	MTV-1000-05A	BUTTON-TOP	PC CLEAR	1		
03	MTV-1000-03A	PANEL-FRONT	ABS-XR(401) NORY	1		
02	MTV-1000-02A	PANEL-BOTTOM	ABS-XR(401) NORY	1		
01	MTV-1000-01A	PANEL-TOP	ABS-XR(401) NORY	1		
NO	DESCRIPTION	MATERIAL	QTY	SPECIFICATION	TREAT	REMARK
				MODEL		MTV-1000 EXPLODED
				P/NAME		
				F/NAME		
				DWG.NO.		





MODEL NO.	TITLE
MMR-1X00	
REV. NO.	REV. NO.
247	247
1.4	1.4
2002.1	2002.1

# PARTS LIST

MODEL NAME	AKAI IDV-720,721	DATE			
SUB NAME	MAIN PCBA				
NO	PART NAME	SPECIFICATION	Q'TY	LOCATION NUMBER	REMARKS
1	PCB MAIN	FR-4 170.0x181.0x1.6T	1		
2	IC, U-COM	TMP87PS39N-3V53	1	U101	
3	IC, POWER	TDA7383	1	U501	
4	IC, AV SWITCH	CXA1855S	1	U201	
5	IC, EEPROM	AT24C04 - 10PC	1	U102	
6	IC, PLL	TC9256F	1	U103	
7	IC, RESET	KIA7032AF	1	U104	
8	IC, E-VOLUME	TDA7462D	1	U401	
9	IC, OP AMP	TL074F	1	U402	
10	IC, OP AMP	TL072F	1	U403	
11	IC, GND ISOLATOR	BA3121F	1	U601	
12	TUNER MODULE	KCC1502NT	1	T101	
13	SOCKET, IC	64PIN	1		
14	TRANSISTOR	KTB1367Y	1	Q701	
15	TRANSISTOR	KTA1663Y	4	Q301,705,710,711	
16	TRANSISTOR	KTC3875Y	10	Q101,201,202,203,204,305,306,307,706,801	
17	TRANSISTOR	KTA1504Y	1	Q304	
18	TRANSISTOR	KTC4375C	5	Q303,702,703,704,707	
19	TRANSISTOR	KRC119S	2	Q709,712	
20	TRANSISTOR	KRC114S	2	Q708,302	
21	TRANSISTOR	KRC106S	1	Q501	
22	DIODE, SWITCHING	KDS184	1	D703	
23	DIODE, SWITCHING	KDS160	6	D601,602,702,708,709,710	
24	DIODE, ZENER	Z02W5.1VY	1	ZD301	
25	DIODE, ZENER	Z02W5.6VY	2	ZD705,706	

NO	PART NAME	SPECIFICATION	Q'TY	LOCATION NUMBER	REMARKS
26	DIODE, ZENER	Z02W7.5VY	1	ZD101	
27	DIODE, ZENER	Z02W9.1VY	2	ZD302,704	
25	X-TAL	4.5MHz(HC-49U))	1	X301	
26	X-TAL	8MHZ(SMD)	1	X101	
27	BEAD CORE	5.7mm	1	BD701	
28	CHIP INDUCTOR	3216, 22uH	1	L101	
29	CHIP RESISTOR	1608, 4R7J, 1/10W	2	R318,308	
30	CHIP RESISTOR	1608, 750J, 1/10W	5	R201,204,207,211,226	
31	CHIP RESISTOR	1608, 101J, 1/10W	8	R145,167,168,170,171,172,218,609	
32	CHIP RESISTOR	1608, 181J, 1/10W	1	R329	
33	CHIP RESISTOR	1608, 331J, 1/10W	1	R221	
34	CHIP RESISTOR	1608, 471J, 1/10W	1	R219	
35	CHIP RESISTOR	1608, 561J, 1/10W	2	R220,224	
36	CHIP RESISTOR	1608, 821J, 1/10W	1	R713	
37	CHIP RESISTOR	1608, 102J, 1/10W	33	R113,117,121,125,130,131,717,718,111,160,166,175,178,181 R310,311,320,321,322,417,712,722,603,604,610,708709,714 R715,802,140,142,144	
38	CHIP RESISTOR	1608, 152J, 1/10W	2	R112,720	
39	CHIP RESISTOR	1608, 222J, 1/10W	16	R225,301,302,303,304,306,327,426,427,428,429 R430,605,606,803,804	
40	CHIP RESISTOR	1608, 272J, 1/10W	1	R222	
41	CHIP RESISTOR	1608, 472J, 1/10W	8	R149,150,309,307,316,317,706,801	
42	CHIP RESISTOR	1608, 512J, 1/10W	1	R119	
43	CHIP RESISTOR	1608, 562J, 1/10W	8	R123,223,231,232,233,234,235,236	
44	CHIP RESISTOR	1608, 103J, 1/10W	35	R110,127,174,202,203,210,212,177,126,413,414,415,416 R419,420,501,502,216,217,214,215,205,206,120,139,141 R143,716,601,602,703,704,705,109,179	
45	CHIP RESISTOR	1608, 153J, 1/10W	6	R124,116,401,402,403,404	
46	CHIP RESISTOR	1608, 183J, 1/10W	14	R132,133,135,13+6,137,151,152,153,154,155,156,157,162,164	
47	CHIP RESISTOR	1608, 223J, 1/10W	13	R102,103,104,105,107,108,114,129,122,128,138,161,169	
48	CHIP RESISTOR	1608, 333J, 1/10W	5	R409,410,411,412,176	

NO	PART NAME	SPECIFICATION	Q'TY	LOCATION NUMBER	REMARKS
49	CHIP RESISTOR	1608, 473J, 1/10W	8	R332,333,405,406,407,408,418,707	
50	CHIP RESISTOR	1608, 563J, 1/10W	1	R115	
51	CHIP RESISTOR	1608, 683J, 1/10W	2	R312,314	
52	CHIP RESISTOR	1608, 104J, 1/10W	4	R118,158,159,315	
53	CHIP RESISTOR	1608, 105J, 1/10W	1	R326	
54	CHIP RESISTOR	2012, 102J, 1/8W	1	R701	
55	CHIP RESISTOR	3216, 2R2J, 1/4W	3	R421,710,227	
56	CHIP RESISTOR	3216, 100J, 1/4W	1	R711	
57	CHIP RESISTOR	3216, 102J, 1/4W	1	R702	
58	CHIP RESISTOR	3216, 222J, 1/4W	1	R319	
59	CERAMIC CHIP CAPACITOR	1608, 470J, 16V, NPO	1	C301	
60	CERAMIC CHIP CAPACITOR	1608, 200J, 16V, NPO	2	C111,112	
61	CERAMIC CHIP CAPACITOR	1608, 240J, 16V, NPO	2	C109,110	
62	CERAMIC CHIP CAPACITOR	1608, 300J, 16V, NPO	1	C302	
63	CERAMIC CHIP CAPACITOR	1608, 561J, 16V, NPO	4	C501,502,503,504	
64	CERAMIC CHIP CAPACITOR	1608, 223J, 16V, X7R	12	C213,305,307,308,309,310,118,119,611,713,521,522	
65	CERAMIC CHIP CAPACITOR	1608, 104J, 16V, X7R	8	C101,103,105,107,113,116,304,505	
66	CERAMIC CHIP CAPACITOR	1608, 224J, 16V, X7R	1	C114	
67	CERAMIC CHIP CAPACITOR	1608, 474J, 16V, X7R	1	C801	
68	CERAMIC CHIP CAPACITOR	1608, 105J, 16V, X7R	15	C202,203,210,212,409,410,411,412,507 C,205,206,601,602,605,606	
69	CERAMIC CHIP CAPACITOR	3216, 2.2uF 16V	1	C306 or C318	
70	CAPACITOR, ELT	MV 1 uF/50V B55	2	C315,316	CAN TYPE
71	CAPACITOR, ELT	SRE 10uF/16V (3.5X5)	24	C201,204,207,211,215,506,712,401,402,403,404,407 C408,413,414,415,416,418,419,802,216,217,405,406	
72	CAPACITOR, ELT	SRE 22uF/16V (5X5)	1	C607	
73	CAPACITOR, ELT	SRE 33uF/16V (6.3X5)	1	C608	
74	CAPACITOR, ELT	SRE 47uF/25V (6.3X5)	13	C115,311,312,313,609,702,703,704,705,706,707,708,508,417	
75	CAPACITOR, ELT	SRE 100uF/16V (8X5)	3	C214,420,218	
76	CAPACITOR, ELT	SRE 2200uF/16V (10X20)	2	C701,711	

NO	PART NAME	SPECIFICATION	Q'TY	LOCATION NUMBER	REMARKS
77	SWITCH RE-SET	SKQLLCE011	1	SW103	
78	SWITCH LEAF	SPPB5A0100	2	SW101, SW102	
79	CONNECTOR, WAFER	16PIN BOARD IN	1	JK101	
80	CONNECTOR, WAFER	6274-050-000-800	1	CN1	
81	CONNECTOR, WAFER	6214-010-010-800	1	CN2	
82	JACK AV 3.5	TSH3604(SKJS6511S)	1	JK202	
83	JACK AV 3.5	TSH3695(SKJS3515S)	1	JK201	
84	DIN JACK	8PIN	1		
85	LINE OUT RCA 8P	2.0mm pitch 280mm (BOTTOM)	1		
86	AV1 INPUT RCA 5P	2.0mm pitch 300mm (TOP)	1		
87	AV2 INPUT RCA 3P	2.0mm pitch 290mm (TOP)	1		
88	AV2 INPUT RCA 2P	2.0mm pitch 300mm (TOP)	1		
89	AV3 INPUT RCA 2P	2.0mm pitch 300mm (TOP)	1		
90	TV INPUT RCA 5P	2.0mm pitch 300mm (BOTTOM)	1		
91	V-OUT RCA 2P	2.0mm pitch 300mm (TOP)	1		
92	ANT JACK WIRE ASS'Y	2.0mm pitch 200mm (TOP)	1		
93	TV CABLE 4P	2.0mm pitch 200mm (TOP)	1		
94	WAFER 2P	YAW200-2 (ANT)	1		
95	WAFER 2P	YAW200-2 (V-OUT)	1		
96	WAFER 3P	YAW200-2 (AV-2)	1		
97	WAFER 4P	YAW200-2 (V-2,V-3)	1		
98	WAFER 4P	YAW200-2 (TV BOX)	1		
99	WAFER 5P	YAW200-2 (AV-1)	1		

# PARTS LIST

MODEL NAME		AKAI ADV-720,721		DATE		
SUB NAME		FRONT KEY PCBA				
NO	PART NAME	SPECIFICATION	Q'TY	LOCATION NUMBER		REMARKS
1	PCB, FRONT	MK-110B	1			M**-1100
2	CONNECTOR, FPC/FFC	6200-507-130-000	1	CN01		
3	IC, REMOCON PHOTSENSITIVE	RPM6938-V4	1	RE101		
4	DIODE, ZENER	Z02W5.1V	1	ZD01		
5	LED LAMP	SML-010MT	12	LD01,02.03,04,05,06.07,08,09,10,11,12		
6	S/W, TACT	2P, 160g, SMD, 4.3	12	SW01,02,03,04,05,06,07,08,09,10,11,12		
7	CHIP RESISTOR	1608, 100J, 1/10W	1	R01		
8	CHIP RESISTOR	1608, 680J, 1/10W	2	R09, R10		
9	CHIP RESISTOR	1608, 221J, 1/10W	2	R07, R08		
10	CHIP RESISTOR	1608, 271J, 1/10W	4	R15, R16, R17, R18		
11	CHIP RESISTOR	1608, 471J, 1/10W	2	R03, R11		
12	CHIP RESISTOR	1608, 751J, 1/10W	1	R12		
13	CHIP RESISTOR	1608, 122J, 1/10W	3	R02, R05, R06		
14	CHIP RESISTOR	1608, 222J, 1/10W	1	R04		
15	CHIP RESISTOR	1608, 472J, 1/10W	2	R13, R14		
16	CHIP CAPACITOR	1608, 104J, 16V, X7R	1	C02		
17	CHIP CAPACITOR	1608, 105J, 16V, X7R	1	C03		
18	CAPACITOR, ELT	SRE 10uF/16V (3.5 X 5)	1	C01		



# PARTS LIST

MODEL NAME		AKAI ADV-720,721		DATE		
SUB NAME		TOP KEY PCBA				
NO	PART NAME	SPECIFICATION	Q'TY	LOCATION NUMBER		REMARKS
1	PCB, TOP	MK-110/120A	1			M**-1100
2	LED LAMP	SML-010MT	6	LD31, LD32, LD33, LD34, LD35, LD36		
3	CONNECTOR, FPC/FFC	6224-010-001-800	1	CN31		
4	CONNECTOR, FPC/FFC	6224-007-001-800	1	CN32		
5	CONNECTOR, WAFER	53261-02P	1	CN33		
6	FFC CABLE	1.0-7-150C(5/6*5/6)-0.05t0.65W	1			
7	S/W, TACT	2P, 160g, SMD, 5.0	6	SW31, SW32, SW33, SW34, SW35, SW36		
8	CHIP RESISTOR	1608, 680J, 1/10W	2	R31, R32		
9	CHIP RESISTOR	1608, 221J, 1/10W	2	R35, R36		
10	CHIP RESISTOR	1608, 271J, 1/10W	2	R37, R38		
11	CHIP RESISTOR	1608, 122J, 1/10W	1	R34		
12	CHIP RESISTOR	1608, 222J, 1/10W	1	R33		