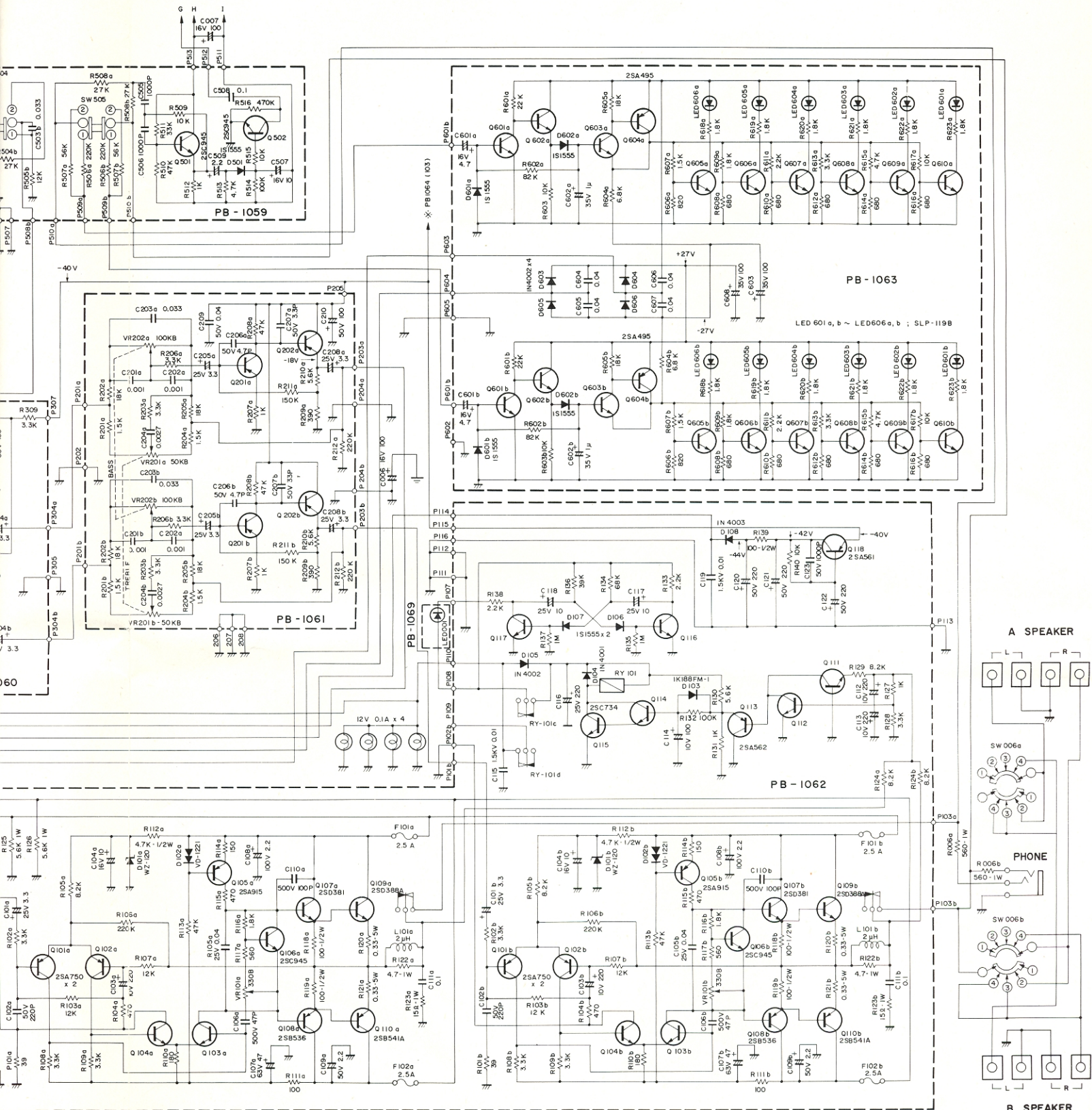


For north European countries, the AC outlet has been removed.

▲ R001 : only for Canada.  
 F006 : 2.5AT (220V north European countries)  
 2.5A (220V, 240V)  
 5A (100V, 120V)

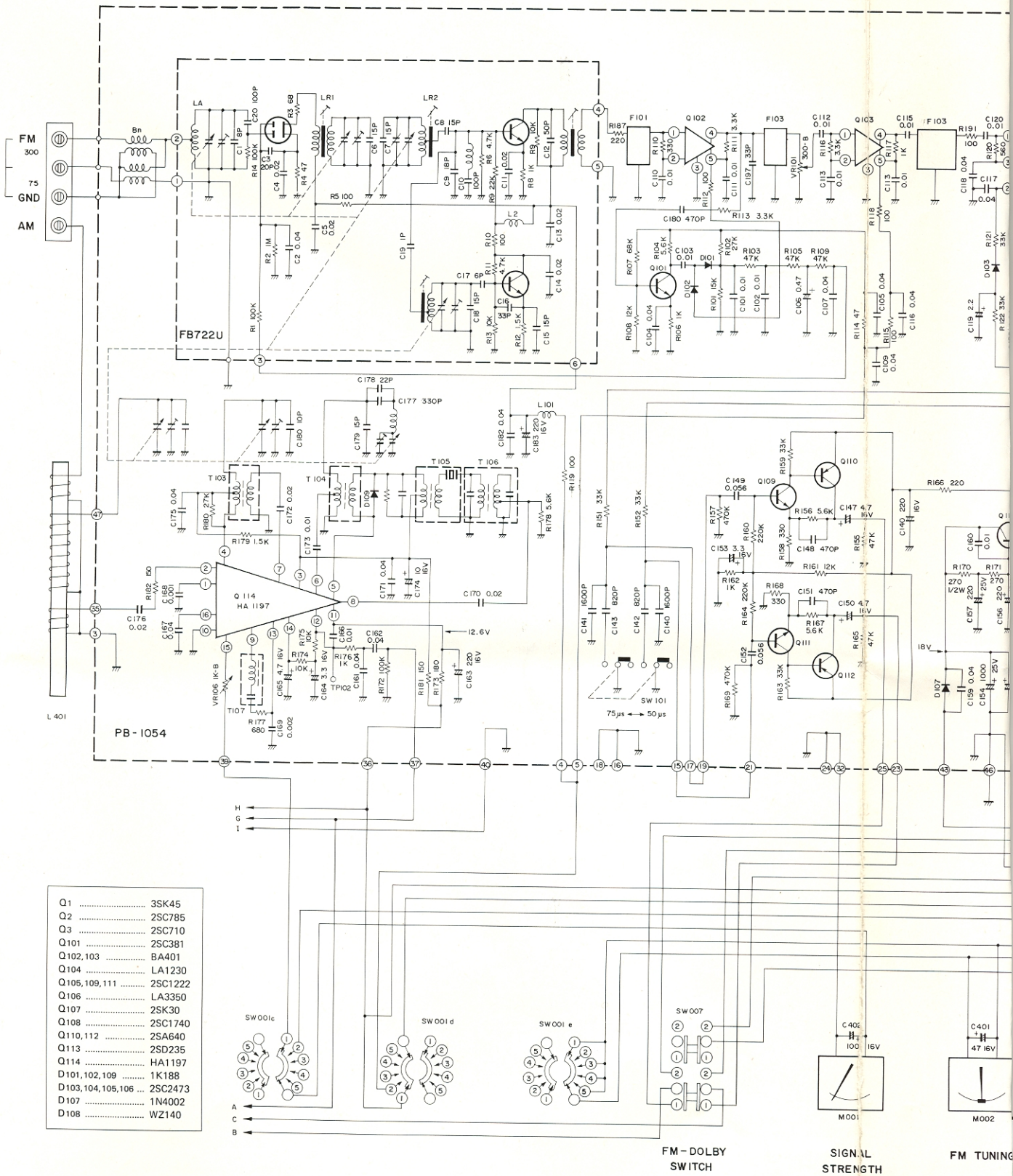
Q101a, 101b, 201a, 201b, 202a, 202b, 301a, 301b, .....	2SA836
Q102a, 102b, 302a, 302b, .....	2SC1345
Q601a, 601b, 602a, 602b, 603a, 603b, 605a, 605b, 606a, .....	2SC733
Q606b, 607a, 607b, 608a, 608b, 609a, 609b, 610a, 610b, .....	2SC733
Q111, 112, 114, 117, .....	2SC733
Q103a, 103b, 104a, 104b, .....	2SC1940

SW 001a ~ e
SW 002a, b
SW 003
SW 004
SW 005
SW 006a, b
SW 007
SW 008
SW 501
SW 502
SW 503
SW 504
SW 505

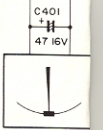
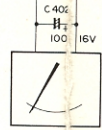
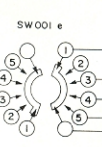


SW 001a - e	FUNCTION	① FM	② AM	③ PHONO 1	④ PHONO 2	⑤ AUX
SW 002a, b	DUBBING	① 1 TO 2	② SOURCE	③ 2 TO 1		
SW 003	MONITOR	① OFF	② ON			
SW 004	MONITOR	① DECK I	② DECK II			
SW 005	MODE	① STEREO	② MONO			
SW 006a, b	SPEAKER	① OFF	② A	③ B	④ A + B	
SW 007	DOLBY	① FM	② DOLBY			
SW 008	POWER					
SW 501	FM MUTING	① OFF	② ON			
SW 502	LOW CUT	① OFF	② ON			
SW 503	HIGH CUT	① OFF	② ON			
SW 504	LOUDNESS	① OFF	② ON			
SW 505	PEAK IND	① 0dB	② -12dB			

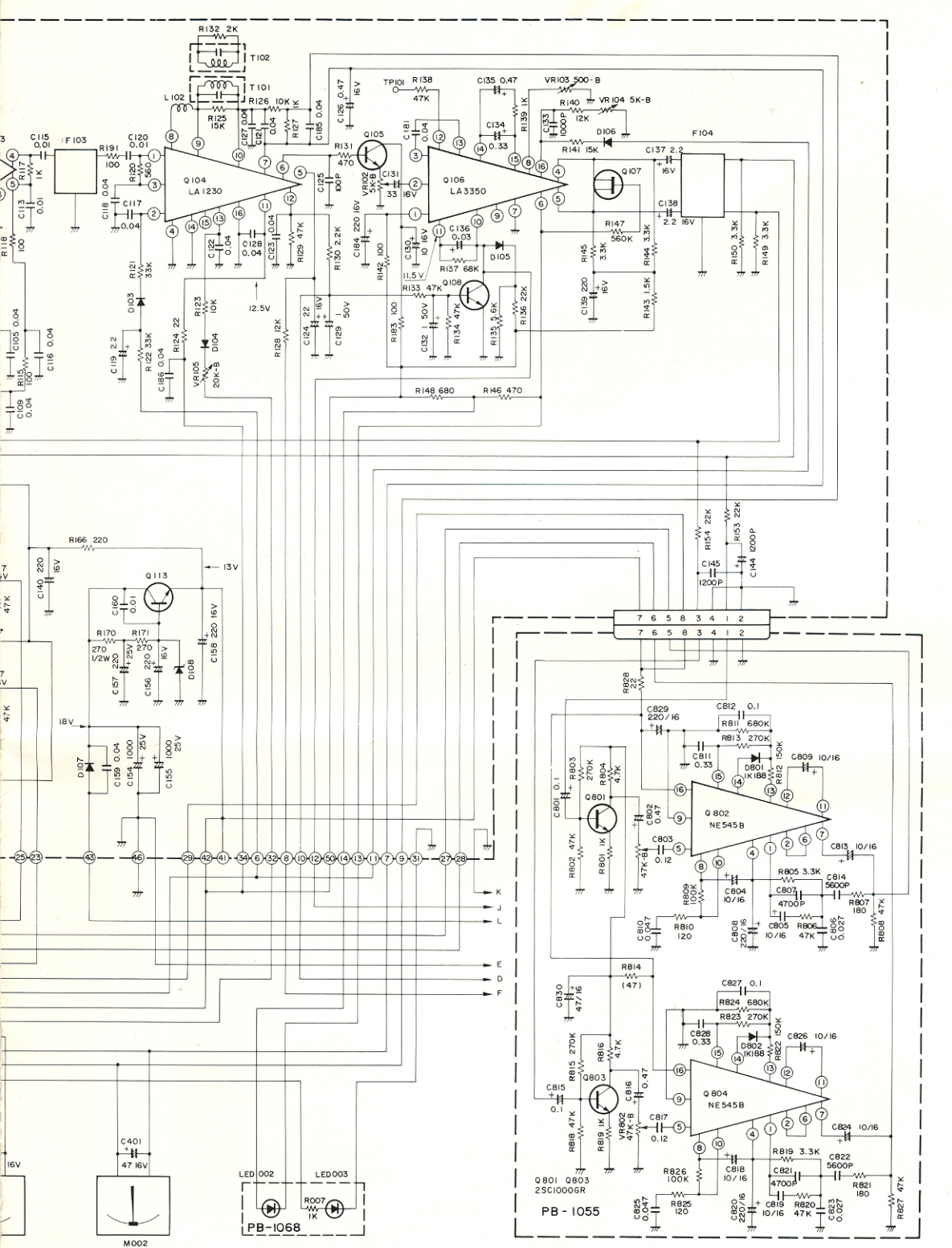
1. Unless otherwise specified, all resistors are in ohm ¼ watt, all capacitors are in micro-farad.
2. Transistors and diodes may be replaced with any types having comparable ratings.
3. Due to continued improvements LUX reserve the right to alter the right or specifications



- |                        |         |
|------------------------|---------|
| Q1 .....               | 3SK45   |
| Q2 .....               | 2SC785  |
| Q3 .....               | 2SC710  |
| Q101 .....             | 2SC381  |
| Q102,103 .....         | BA401   |
| Q104 .....             | LA1230  |
| Q105,109,111 .....     | 2SC1222 |
| Q106 .....             | LA3350  |
| Q107 .....             | 2SK30   |
| Q108 .....             | 2SC1740 |
| Q110,112 .....         | 2SA640  |
| Q113 .....             | 2SD235  |
| Q114 .....             | HA1197  |
| D101,102,109 .....     | 1K188   |
| D103,104,105,106 ..... | 2SC2473 |
| D107 .....             | 1N4002  |
| D108 .....             | WZ140   |



FM-DOLBY SWITCH      SIGNAL STRENGTH      FM TUNING



AL  
GTH

FM TUNING

STEREO DOLBY  
IND IND

R-1050 RF SECTION